

For Research Use Only

CEP57 Polyclonal antibody

Catalog Number:27031-1-AP



Basic Information

Catalog Number:

27031-1-AP

Size:

150ul , Concentration: 400 ug/ml by Nanodrop;

Source:

Rabbit

Isotype:

IgG

Immunogen Catalog Number:

AG24885

GenBank Accession Number:

BC001233

GeneID (NCBI):

9702

UNIPROT ID:

Q86XR8

Full Name:

centrosomal protein 57kDa

Observed MW:

57 kDa

Purification Method:

Antigen affinity purification

Recommended Dilutions:

WB: 1:500-1:2000

Applications

Tested Applications:

WB, ELISA

Species Specificity:

human

Positive Controls:

WB : HEK-293 cells, human testis tissue

Background Information

Cep57 is an ubiquitously-expressed protein that functions in spindle assembly, spindle pole integrity and central spindle organization as a microtubule- and centrosome-associated protein. Also, Cep57 is required for centriole duplication, and is highly expressed in prostate cancer cells.

Storage

Storage:

Store at -20°C. Stable for one year after shipment.

Storage Buffer:

PBS with 0.02% sodium azide and 50% glycerol, pH7.3

Aliquoting is unnecessary for -20°C storage

***** 20ul sizes contain 0.1%BSA**

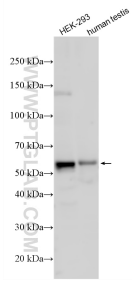
For technical support and original validation data for this product please contact:

T: 1 (888) 4PTGLAB (1-888-478-4522) (toll free in USA), or 1(312) 455-8498 (outside USA)

E: proteintech@ptglab.com
W: ptglab.com

This product is exclusively available under Proteintech Group brand and is not available to purchase from any other manufacturer.

Selected Validation Data



Various lysates were subjected to SDS PAGE followed by western blot with 27031-1-AP (CEP57 antibody) at dilution of 1:1000 incubated at room temperature for 1.5 hours.