

For Research Use Only

CEP57 Polyclonal antibody, PBS Only

Catalog Number:27031-1-PBS



Basic Information

Catalog Number: 27031-1-PBS	GenBank Accession Number: BC001233	Purification Method: Antigen affinity purification
Size: 100ug , Concentration: 1 mg/ml by Nanodrop;	GeneID (NCBI): 9702	
Source: Rabbit	UNIPROT ID: Q86XR8	
Isotype: IgG	Full Name: centrosomal protein 57kDa	
Immunogen Catalog Number: AG24885	Observed MW: 57 kDa	

Applications

Tested Applications:
WB, Indirect ELISA

Species Specificity:
human

Background Information

Cep57 is an ubiquitously-expressed protein that functions in spindle assembly, spindle pole integrity and central spindle organization as a microtubule- and centrosome-associated protein. Also, Cep57 is required for centriole duplication, and is highly expressed in prostate cancer cells.

Storage

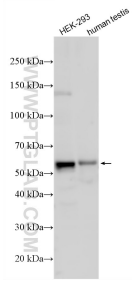
Storage:
Store at -80°C.

Storage Buffer:
PBS only, pH7.3

For technical support and original validation data for this product please contact:
T: 1 (888) 4PTGLAB (1-888-478-4522) (toll free in USA), or 1(312) 455-8498 (outside USA) E: proteintech@ptglab.com
W: ptglab.com

This product is exclusively available under Proteintech Group brand and is not available to purchase from any other manufacturer.

Selected Validation Data



Various lysates were subjected to SDS PAGE followed by western blot with 27031-1-AP (CEP57 antibody) at dilution of 1:1000 incubated at room temperature for 1.5 hours. This data was developed using the same antibody clone with 27031-1-PBS in a different storage buffer formulation.