

For Research Use Only

# SYS1 Polyclonal antibody

Catalog Number: 27048-1-AP



## Basic Information

<b>Catalog Number:</b> 27048-1-AP	<b>GenBank Accession Number:</b> BC048286	<b>Purification Method:</b> Antigen affinity purification
<b>Size:</b> 150ul , Concentration: 360 ug/ml by Nanodrop;	<b>GeneID (NCBI):</b> 90196	<b>Recommended Dilutions:</b> IHC: 1:50-1:500
<b>Source:</b> Rabbit	<b>UNIPROT ID:</b> Q8N2H4	
<b>Isotype:</b> IgG	<b>Full Name:</b> SYS1 Golgi-localized integral membrane protein homolog (S. cerevisiae)	
<b>Immunogen Catalog Number:</b> AG24719	<b>Calculated MW:</b> 156 aa, 18 kDa	

## Applications

<b>Tested Applications:</b> IHC, ELISA	<b>Positive Controls:</b> IHC : human kidney tissue,
<b>Species Specificity:</b> human	
<b>Note-IHC: suggested antigen retrieval with TE buffer pH 9.0; (*) Alternatively, antigen retrieval may be performed with citrate buffer pH 6.0</b>	

## Background Information

SYS1 forms a complex with ADP-ribosylation factor-related protein-1 (ARFRP1; 604699) and targets ARFRP1 to the Golgi apparatus(PMID: 15077113).

## Storage

**Storage:**  
Store at -20°C. Stable for one year after shipment.  
**Storage Buffer:**  
PBS with 0.02% sodium azide and 50% glycerol, pH7.3  
Aliquoting is unnecessary for -20°C storage

\*\*\* 20ul sizes contain 0.1% BSA

For technical support and original validation data for this product please contact:

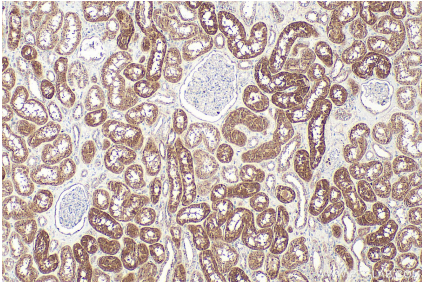
T: 1 (888) 4PTGLAB (1-888-478-4522) (toll free in USA), or 1(312) 455-8498 (outside USA)

E: [proteintech@ptglab.com](mailto:proteintech@ptglab.com)  
W: [ptglab.com](http://ptglab.com)

This product is exclusively available under Proteintech Group brand and is not available to purchase from any other manufacturer.

---

## Selected Validation Data



Immunohistochemical analysis of paraffin-embedded human kidney tissue slide using 27048-1-AP (SYS1 antibody) at dilution of 1:200 (under 10x lens). Heat mediated antigen retrieval with Tris-EDTA buffer (pH 9.0).