

For Research Use Only

SYS1 Polyclonal antibody, PBS Only

Catalog Number: 27048-1-PBS



Basic Information

Catalog Number: 27048-1-PBS	GenBank Accession Number: BC048286	Purification Method: Antigen affinity purification
Size: 100ug, Concentration: 1 mg/ml by Nanodrop;	GeneID (NCBI): 90196	
Source: Rabbit	UNIPROT ID: Q8N2H4	
Isotype: IgG	Full Name: SYS1 Golgi-localized integral membrane protein homolog (S. cerevisiae)	
Immunogen Catalog Number: AG24719	Calculated MW: 156 aa, 18 kDa	

Applications

Tested Applications:
IHC, Indirect ELISA

Species Specificity:
human

Background Information

SYS1 forms a complex with ADP-ribosylation factor-related protein-1 (ARFRP1; 604699) and targets ARFRP1 to the Golgi apparatus(PMID: 15077113).

Storage

Storage:
Store at -80°C.

Storage Buffer:
PBS only, pH7.3

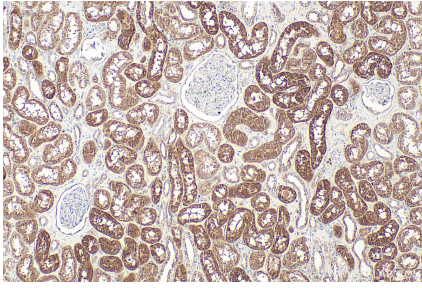
For technical support and original validation data for this product please contact:

T: 1 (888) 4PTGLAB (1-888-478-4522) (toll free in USA), or 1(312) 455-8498 (outside USA)

E: proteintech@ptglab.com
W: ptglab.com

This product is exclusively available under Proteintech Group brand and is not available to purchase from any other manufacturer.

Selected Validation Data



Immunohistochemical analysis of paraffin-embedded human kidney tissue slide using 27048-1-AP (SYS1 antibody) at dilution of 1:200 (under 10x lens). Heat mediated antigen retrieval with Tris-EDTA buffer (pH 9.0). This data was developed using the same antibody clone with 27048-1-PBS in a different storage buffer formulation.