

For Research Use Only

RAD21 Polyclonal antibody

Catalog Number: 27071-1-AP

Featured Product

3 Publications



Basic Information

Catalog Number: 27071-1-AP	GenBank Accession Number: BC050381	Purification Method: Antigen affinity purification
Size: 150ul, Concentration: 650 µg/ml by Nanodrop and 433 µg/ml by Bradford method using BSA as the standard;	GeneID (NCBI): 5885	Recommended Dilutions: WB 1:1000-1:4000 IHC 1:50-1:500 IF 1:50-1:500
Source: Rabbit	Full Name: RAD21 homolog (S. pombe)	
Isotype: IgG	Calculated MW: 631 aa, 72 kDa	
Immunogen Catalog Number: AG25481	Observed MW: 120 kDa	

Applications

Tested Applications: IF, IHC, WB, ELISA	Positive Controls: WB : A549 cells, HeLa cells IHC : human breast cancer tissue, IF : MDCK cells,
Cited Applications: IHC, WB	
Species Specificity: human, canidae	
Cited Species: human	
Note-IHC: suggested antigen retrieval with TE buffer pH 9.0; (*) Alternatively, antigen retrieval may be performed with citrate buffer pH 6.0	

Background Information

RAD21, also named as Nuclear matrix protein 1, is a 631 amino acid protein, which belongs to the rad21 family. The calculated molecular weight of RAD21 is 72 kDa, but the phosphorylated RAD21 is about 120 kDa. The protein encoded by this gene is highly similar to the gene product of Schizosaccharomyces pombe rad21, a gene involved in the repair of DNA double-strand breaks, as well as in chromatid cohesion during mitosis. This protein is a nuclear phospho-protein, which becomes hyperphosphorylated in cell cycle M phase. The highly regulated association of this protein with mitotic chromatin specifically at the centromere region suggests its role in sister chromatid cohesion in mitotic cells

Notable Publications

Author	Pubmed ID	Journal	Application
Yulan Zeng	32896617	Cancer Lett	WB
Rui Gou	35860572	Front Oncol	IHC,WB
Yiming He	33931584	Cell Death Dis	WB

Storage

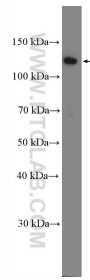
Storage:
Store at -20°C. Stable for one year after shipment.
Storage Buffer:
PBS with 0.02% sodium azide and 50% glycerol pH 7.3.
Aliquoting is unnecessary for -20°C storage

*** 20ul sizes contain 0.1% BSA

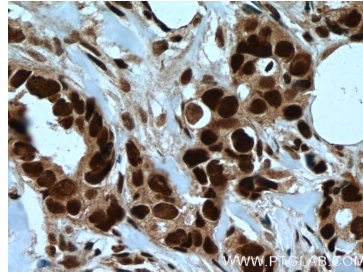
For technical support and original validation data for this product please contact:
T: 1 (888) 4PTGLAB (1-888-478-4522) (toll free in USA), or 1(312) 455-8498 (outside USA)
E: proteintech@ptglab.com
W: ptglab.com

This product is exclusively available under Proteintech Group brand and is not available to purchase from any other manufacturer.

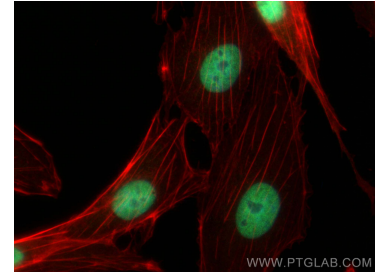
Selected Validation Data



A549 cells were subjected to SDS PAGE followed by western blot with 27071-1-AP (RAD21 Antibody) at dilution of 1:2000 incubated at room temperature for 1.5 hours.



Immunohistochemical analysis of paraffin-embedded human breast cancer tissue slide using 27071-1-AP (RAD21 Antibody) at dilution of 1:200 (under 40x lens). Heat mediated antigen retrieval with Tris-EDTA buffer (pH 9.0).



Immunofluorescent analysis of (4% PFA) fixed MDCK cells using RAD21 antibody (27071-1-AP) at dilution of 1:200 and CoraLite®488-Conjugated AffiniPure Goat Anti-Rabbit IgG(H+L), CL594-phalloidin (red).