

For Research Use Only

ISOC2 Polyclonal antibody

Catalog Number: 27082-1-AP



Basic Information

Catalog Number:

27082-1-AP

Size:

150ul, Concentration: 550 ug/ml by Nanodrop and 333 ug/ml by Bradford method using BSA as the standard;

Source:

Rabbit

Isotype:

IgG

Immunogen Catalog Number:

AG23936

GenBank Accession Number:

BC017344

GeneID (NCBI):

79763

UNIPROT ID:

Q96AB3

Full Name:

isochorismatase domain containing 2

Observed MW:

28 kDa

Purification Method:

Antigen affinity purification

Recommended Dilutions:

WB 1:1000-1:6000

IHC 1:100-1:400

Applications

Tested Applications:

WB, IHC, ELISA

Species Specificity:

human, mouse, rat

Note-IHC: suggested antigen retrieval with TE buffer pH 9.0; (*) Alternatively, antigen retrieval may be performed with citrate buffer pH 6.0

Positive Controls:

WB : LNCaP cells, mouse kidney tissue, mouse liver tissue, mouse testis tissue, rat testis tissue

IHC : human kidney tissue, human liver tissue

Storage

Storage:

Store at -20°C. Stable for one year after shipment.

Storage Buffer:

PBS with 0.02% sodium azide and 50% glycerol pH 7.3.

Aliquoting is unnecessary for -20°C storage

*** 20ul sizes contain 0.1% BSA

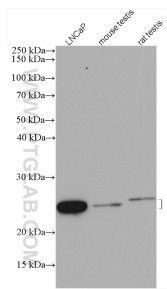
For technical support and original validation data for this product please contact:

T: 1 (888) 4PTGLAB (1-888-478-4522) (toll free in USA), or 1(312) 455-8498 (outside USA)

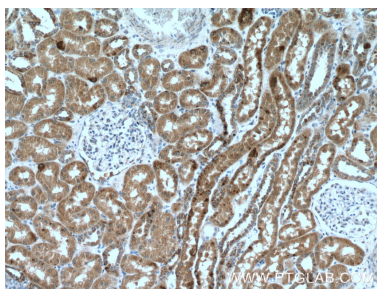
E: proteintech@ptglab.com
W: ptglab.com

This product is exclusively available under Proteintech Group brand and is not available to purchase from any other manufacturer.

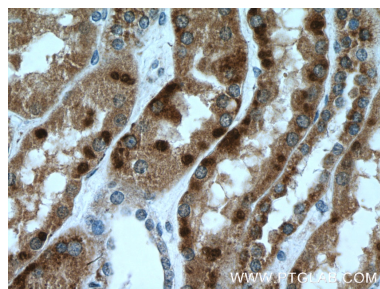
Selected Validation Data



Various lysates were subjected to SDS PAGE followed by western blot with 27082-1-AP (ISOC2 antibody) at dilution of 1:3000 incubated at room temperature for 1.5 hours.



Immunohistochemical analysis of paraffin-embedded human kidney tissue slide using 27082-1-AP (ISOC2 Antibody) at dilution of 1:200 (under 10x lens).



Immunohistochemical analysis of paraffin-embedded human kidney tissue slide using 27082-1-AP (ISOC2 Antibody) at dilution of 1:200 (under 40x lens).