

For Research Use Only

# SHCBP1L Polyclonal antibody

Catalog Number: 27108-1-AP

1 Publications



## Basic Information

Catalog Number:

27108-1-AP

Size:

150ul, Concentration: 400 ug/ml by Nanodrop and 267 ug/ml by Bradford method using BSA as the standard;

Source:

Rabbit

Isotype:

IgG

Immunogen Catalog Number:

AG25903

GenBank Accession Number:

BC050305

GeneID (NCBI):

81626

UNIPROT ID:

Q9BZQ2

Full Name:

chromosome 1 open reading frame 14

Calculated MW:

725 aa, 81 kDa

Observed MW:

81 kDa

Purification Method:

Antigen affinity purification

Recommended Dilutions:

WB 1:1000-1:4000

## Applications

Tested Applications:

WB, ELISA

Cited Applications:

WB

Species Specificity:

human, mouse, rat

Cited Species:

human, mouse

Positive Controls:

WB : mouse testis tissue, rat testis tissue

## Background Information

SHCBP1L, also known as C1orf14, is predominantly expressed in male germ cells. In association with HSPA2, It participates in the maintenance of spindle integrity during meiosis in male germ cells.

## Notable Publications

Author	Pubmed ID	Journal	Application
Yaqiong Zhang	38912589	JCI Insight	WB

## Storage

Storage:

Store at -20°C. Stable for one year after shipment.

Storage Buffer:

PBS with 0.02% sodium azide and 50% glycerol pH 7.3.

Aliquoting is unnecessary for -20°C storage

\*\*\* 20ul sizes contain 0.1% BSA

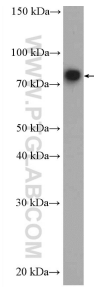
For technical support and original validation data for this product please contact:

T: 1 (888) 4PTGLAB (1-888-478-4522) (toll free in USA), or 1(312) 455-8498 (outside USA)

E: [proteintech@ptglab.com](mailto:proteintech@ptglab.com)  
W: [ptglab.com](http://ptglab.com)

This product is exclusively available under Proteintech Group brand and is not available to purchase from any other manufacturer.

## Selected Validation Data



mouse testis tissue were subjected to SDS PAGE followed by western blot with 27108-1-AP (SHCBP1L antibody) at dilution of 1:2000 incubated at room temperature for 1.5 hours.