

For Research Use Only

MCF2L Polyclonal antibody

Catalog Number: 27110-1-AP



Basic Information

Catalog Number: 27110-1-AP	GenBank Accession Number: BC020208	Purification Method: Antigen affinity purification
Size: 150ul , Concentration: 510 ug/ml by Nanodrop;	GeneID (NCBI): 23263	Recommended Dilutions: WB: 1:5000-1:50000
Source: Rabbit	UNIPROT ID: O15068	
Isotype: IgG	Full Name: MCF.2 cell line derived transforming sequence-like	
Immunogen Catalog Number: AG25906	Calculated MW: 984aa,112 kDa; 1108aa,124 kDa	
	Observed MW: 102 kDa	

Applications

Tested Applications: WB, ELISA	Positive Controls: WB : mouse brain tissue, rat brain tissue
Species Specificity: human, mouse, rat	

Background Information

MCF2L, also known as DBS or ARHGEF14, encodes a guanine nucleotide exchange factor that specifically interacts with GTP-bound Rac1 and modulates Rho/Rac signaling cascades. This protein regulates cytoskeletal dynamics and cell migration, with emerging evidence linking its dysregulation to cancer progression. MCF2L has been identified as a genetic locus associated with osteoarthritis (PMID: 25483302).

Storage

Storage:
Store at -20°C. Stable for one year after shipment.
Storage Buffer:
PBS with 0.02% sodium azide and 50% glycerol, pH7.3
Aliquoting is unnecessary for -20°C storage

*** 20ul sizes contain 0.1% BSA

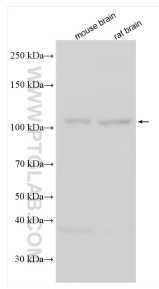
For technical support and original validation data for this product please contact:

T: 1 (888) 4PTGLAB (1-888-478-4522) (toll free in USA), or 1(312) 455-8498 (outside USA)

E: proteintech@ptglab.com
W: ptglab.com

This product is exclusively available under Proteintech Group brand and is not available to purchase from any other manufacturer.

Selected Validation Data



Various lysates were subjected to SDS PAGE followed by western blot with 27110-1-AP (MCF2L antibody) at dilution of 1:10000 incubated at room temperature for 1.5 hours.