

For Research Use Only

# ADAM15 Polyclonal antibody

Catalog Number: 27124-1-AP



## Basic Information

### Catalog Number:

27124-1-AP

### Size:

150ul, Concentration: 150 ug/ml by Nanodrop;

### Source:

Rabbit

### Isotype:

IgG

### Immunogen Catalog Number:

AG25947

### GenBank Accession Number:

BC014566

### GeneID (NCBI):

8751

### UNIPROT ID:

Q13444

### Full Name:

ADAM metalloproteinase domain 15

### Calculated MW:

93 kDa

### Observed MW:

70 kDa

### Purification Method:

Antigen affinity purification

### Recommended Dilutions:

WB 1:500-1:3000

## Applications

### Tested Applications:

WB, ELISA

### Species Specificity:

human

### Positive Controls:

WB : A549 cells, HUVEC cells

## Background Information

ADAM15, a member of the ADAM (a disintegrin and metalloprotease) family, is a membrane protein containing both protease and adhesion domains and may be involved in tumor invasion and metastasis (PMID:15756594). It is also named as MDC15. ADAM15 is required for the activation of the FAK and Src pathways to generate apoptosis resistance in response to apoptotic signalling or cell stress (PMID: 11741929). ADAM15 is processed during epididymal maturation and acrosome reaction and that it may play a role during sperm-egg binding. Jurkat and testicular cells express the precursor ADAM15 of 110 kDa, as well as the ADAM15 processing form, consisting of about 75-85 kDa (PMID:18390692). ADAM15 has some isoforms with the calculated molecular mass of 55-92 kDa.

## Storage

### Storage:

Store at -20°C. Stable for one year after shipment.

### Storage Buffer:

PBS with 0.02% sodium azide and 50% glycerol pH 7.3.

Aliquoting is unnecessary for -20°C storage

\*\*\* 20ul sizes contain 0.1% BSA

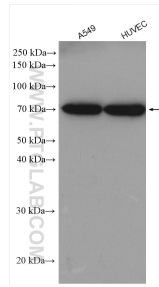
For technical support and original validation data for this product please contact:

T: 1 (888) 4PTGLAB (1-888-478-4522) (toll free in USA), or 1(312) 455-8498 (outside USA)

E: [proteintech@ptglab.com](mailto:proteintech@ptglab.com)  
W: [ptglab.com](http://ptglab.com)

This product is exclusively available under Proteintech Group brand and is not available to purchase from any other manufacturer.

## Selected Validation Data



Various lysates were subjected to SDS PAGE followed by western blot with 27124-1-AP (ADAM15 antibody) at dilution of 1:1500 incubated at room temperature for 1.5 hours.