

For Research Use Only

FAM3B Polyclonal antibody

Catalog Number: 27131-1-AP **2 Publications**



Basic Information

Catalog Number: 27131-1-AP	GenBank Accession Number: BC057829	Purification Method: Antigen affinity purification
Size: 150ul , Concentration: 500 µg/ml by Nanodrop and 333 µg/ml by Bradford method using BSA as the standard;	GeneID (NCBI): 54097	Recommended Dilutions: WB 1:200-1:1000 IHC 1:50-1:500
Source: Rabbit	Full Name: family with sequence similarity 3, member B	
Isotype: IgG	Calculated MW: 26 kDa	
Immunogen Catalog Number: AG25955	Observed MW: 26 kDa, 23 kDa	

Applications

Tested Applications: IHC, WB, ELISA	Positive Controls:
Cited Applications: IHC	WB: human milk tissue,
Species Specificity: human, mouse	IHC: human pancreas tissue, mouse pancreas tissue
Cited Species: human	

Note-IHC: suggested antigen retrieval with TE buffer pH 9.0; (*) Alternatively, antigen retrieval may be performed with citrate buffer pH 6.0

Background Information

FAM3B, also known as Pancreatic-derived factor (PANDER), is a secreted glycoprotein that belongs to the cytokine like-protein family. There are four members in this gene family (FAM3A, FAM3B, FAM3C and FAM3D). As a result of alternative splicing and alternate signal peptide cleavage sites, multiple isoforms are known. FAM3B is selectively expressed at a high level in pancreatic islets and at low levels in the small intestine, prostate, and certain neurons.

Notable Publications

Author	Pubmed ID	Journal	Application
Wenfang Wang	35082524	Int J Gen Med	IHC
Renhong Huang	37251343	Front Pharmacol	IHC

Storage

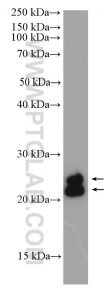
Storage:
Store at -20°C. Stable for one year after shipment.
Storage Buffer:
PBS with 0.02% sodium azide and 50% glycerol pH 7.3.
Aliquoting is unnecessary for -20°C storage

*** 20ul sizes contain 0.1% BSA

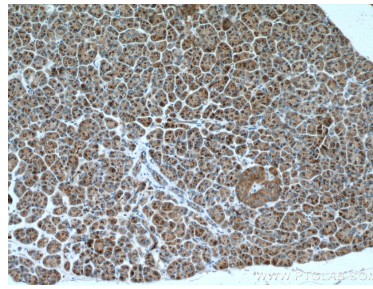
For technical support and original validation data for this product please contact:
T: 1 (888) 4PTGLAB (1-888-478-4522) (toll free in USA), or 1(312) 455-8498 (outside USA)
E: proteintech@ptglab.com
W: ptglab.com

This product is exclusively available under Proteintech Group brand and is not available to purchase from any other manufacturer.

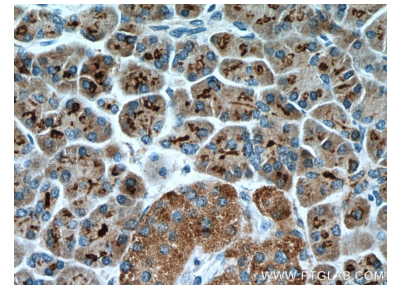
Selected Validation Data



human milk were subjected to SDS PAGE followed by western blot with 27131-1-AP (FAM3B antibody) at dilution of 1:300 incubated at room temperature for 1.5 hours.



Immunohistochemical analysis of paraffin-embedded human pancreas tissue slide using 27131-1-AP (FAM3B antibody) at dilution of 1:200 (under 10x lens. Heat mediated antigen retrieval with Tris-EDTA buffer (pH 9.0).



Immunohistochemical analysis of paraffin-embedded human pancreas tissue slide using 27131-1-AP (FAM3B antibody) at dilution of 1:200 (under 40x lens. Heat mediated antigen retrieval with Tris-EDTA buffer (pH 9.0).