

For Research Use Only

NEK1 Polyclonal antibody

Catalog Number: 27146-1-AP

Featured Product

2 Publications



Basic Information

Catalog Number:

27146-1-AP

Size:

150ul, Concentration: 850 µg/ml by Nanodrop and 333 µg/ml by Bradford method using BSA as the standard;

Source:

Rabbit

Isotype:

IgG

Immunogen Catalog Number:

AG25970

GenBank Accession Number:

BC114491

GeneID (NCBI):

4750

Full Name:

NIMA (never in mitosis gene a)-related kinase 1

Calculated MW:

1258 aa, 143 kDa

Observed MW:

170 kDa

Purification Method:

Antigen affinity purification

Recommended Dilutions:

WB 1:500-1:2000
IP 0.5-4.0 µg for 1.0-3.0 mg of total protein lysate
IHC 1:50-1:500
IF 1:200-1:800

Applications

Tested Applications:

IF, IHC, IP, WB, ELISA

Cited Applications:

IHC, IP, WB

Species Specificity:

human, rat, mouse

Cited Species:

human

Note-IHC: suggested antigen retrieval with TE buffer pH 9.0; (*) Alternatively, antigen retrieval may be performed with citrate buffer pH 6.0

Positive Controls:

WB: PC-12 cells, mouse pancreas tissue, HeLa cells

IP: PC-12 cells, HeLa cells

IHC: human lung cancer tissue,

IF: HeLa cells,

Background Information

Notable Publications

Author	Pubmed ID	Journal	Application
Lei Chen	37835513	Cancers (Basel)	WB,IHC
Mateusz Gregorczyk	37188479	Life Sci Alliance	WB,IP

Storage

Storage:

Store at -20°C. Stable for one year after shipment.

Storage Buffer:

PBS with 0.02% sodium azide and 50% glycerol pH 7.3.

Aliquoting is unnecessary for -20°C storage

*** 20ul sizes contain 0.1% BSA

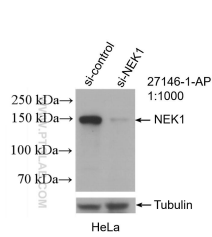
For technical support and original validation data for this product please contact:

T: 1 (888) 4PTGLAB (1-888-478-4522) (toll free in USA), or 1(312) 455-8498 (outside USA)

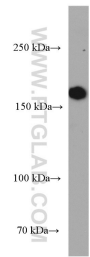
E: proteintech@ptglab.com
W: ptglab.com

This product is exclusively available under Proteintech Group brand and is not available to purchase from any other manufacturer.

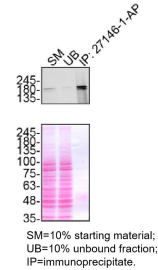
Selected Validation Data



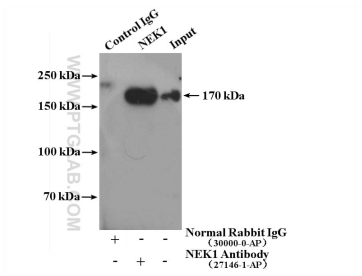
WB result of NEK1 antibody (27146-1-AP; 1:1000; incubated at room temperature for 1.5 hours) with sh-Control and sh-NEK1 transfected HeLa cells.



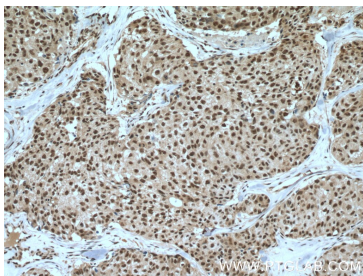
PC-12 cells were subjected to SDS PAGE followed by western blot with 27146-1-AP (NEK1 antibody) at dilution of 1:1000 incubated at room temperature for 1.5 hours.



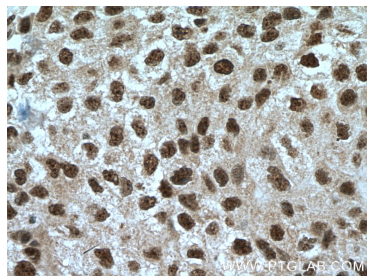
HeLa lysates prepared and IP of NEK1 performed using 1.0 µg of 27146-1-AP coupled to protein A-Sepharose beads. The Ponceau stained transfers of each blot are shown. Data provided by YCharOS, an open science company with a mission to validate commercial antibodies to improve scientific reproducibility and transparency.



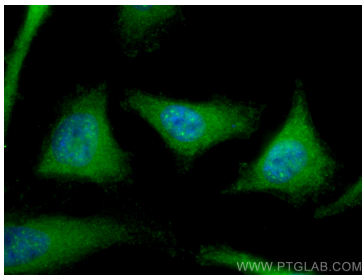
IP result of anti-NEK1 (IP:27146-1-AP, 4ug; Detection:27146-1-AP 1:500) with PC-12 cells lysate 3080 ug.



Immunohistochemical analysis of paraffin-embedded human lung cancer tissue slide using 27146-1-AP (NEK1 antibody) at dilution of 1:200 (under 10x lens. Heat mediated antigen retrieval with Tris-EDTA buffer (pH 9.0).



Immunohistochemical analysis of paraffin-embedded human lung cancer tissue slide using 27146-1-AP (NEK1 antibody) at dilution of 1:200 (under 40x lens. Heat mediated antigen retrieval with Tris-EDTA buffer (pH 9.0).



Immunofluorescent analysis of (-20°C Methanol) fixed HeLa cells using NEK1 antibody (27146-1-AP) at dilution of 1:400 and CoraLite®488-Conjugated AffiniPure Goat Anti-Rabbit IgG(H+L).