

For Research Use Only

ABCB8 Polyclonal antibody, PBS Only

Catalog Number: 27158-1-PBS

Featured Product



Basic Information

Catalog Number:

27158-1-PBS

Size:

100ug, Concentration: 1mg/ml by Nanodrop;

Source:

Rabbit

Isotype:

IgG

Immunogen Catalog Number:

AG25935

GenBank Accession Number:

BC141814

GeneID (NCBI):

11194

UNIPROT ID:

Q9NUT2

Full Name:

ATP-binding cassette, sub-family B (MDR/TAP), member 8

Calculated MW:

735 aa, 80 kDa

Observed MW:

60-65 kDa

Purification Method:

Antigen affinity purification

Applications

Tested Applications:

WB, IHC, IF/ICC, ELISA

Species Specificity:

human, mouse, rat

Background Information

ABCB8 (ATP-binding cassette sub-family B member 8) is a protein located in the mitochondrial inner membrane and belongs to the ATP-binding cassette (ABC) transporter superfamily. It plays a crucial role in maintaining mitochondrial iron homeostasis and the maturation of cellular iron-sulfur cluster proteins. ABCB8 is essential for normal cardiac function by promoting the export of iron from mitochondria. Additionally, ABCB8 forms a complex with the mitochondrial KATP channel, protecting cells from oxidative stress damage. The loss of function or abnormal expression of ABCB8 is associated with various diseases, including cardiomyopathy and iron metabolism disorders.

Storage

Storage:

Store at -80°C.

Storage Buffer:

PBS only, pH7.3

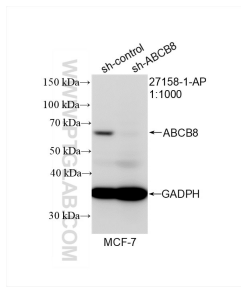
For technical support and original validation data for this product please contact:

T: 1 (888) 4PTGLAB (1-888-478-4522) (toll free in USA), or 1(312) 455-8498 (outside USA)

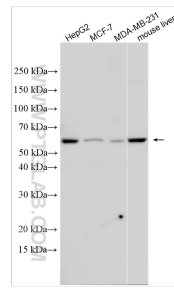
E: proteintech@ptglab.com
W: ptglab.com

This product is exclusively available under Proteintech Group brand and is not available to purchase from any other manufacturer.

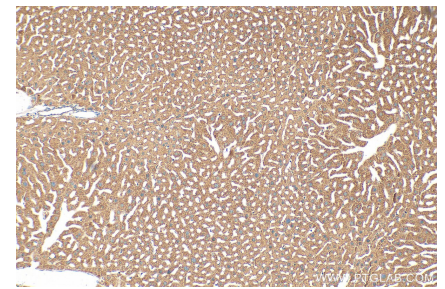
Selected Validation Data



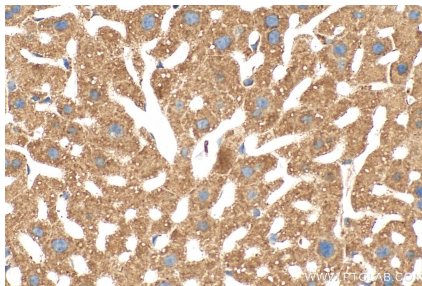
WB result of ABCB8 antibody (27158-1-AP; 1:1000; incubated at room temperature for 1.5 hours) with sh-Control and sh-ABCB8 transfected MCF-7 cells. This data was developed using the same antibody clone with 27158-1-PBS in a different storage buffer formulation.



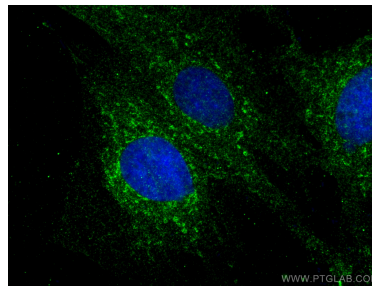
Various lysates were subjected to SDS PAGE followed by western blot with 27158-1-AP (ABCB8 antibody) at dilution of 1:1000 incubated at room temperature for 1.5 hours. This data was developed using the same antibody clone with 27158-1-PBS in a different storage buffer formulation.



Immunohistochemical analysis of paraffin-embedded mouse liver tissue slide using 27158-1-AP (ABCB8 antibody) at dilution of 1:200 (under 10x lens). Heat mediated antigen retrieval with Tris-EDTA buffer (pH 9.0). This data was developed using the same antibody clone with 27158-1-PBS in a different storage buffer formulation.



Immunohistochemical analysis of paraffin-embedded mouse liver tissue slide using 27158-1-AP (ABCB8 antibody) at dilution of 1:200 (under 40x lens). Heat mediated antigen retrieval with Tris-EDTA buffer (pH 9.0). This data was developed using the same antibody clone with 27158-1-PBS in a different storage buffer formulation.



Immunofluorescent analysis of (4% PFA) fixed H9C2 cells using ABCB8 antibody (27158-1-AP) at dilution of 1:200 and CoraLite@488-Conjugated AffiniPure Goat Anti-Rabbit IgG(H+L). This data was developed using the same antibody clone with 27158-1-PBS in a different storage buffer formulation.