

For Research Use Only

Complement C2 Polyclonal antibody

Catalog Number: 27175-1-AP

2 Publications



Basic Information

Catalog Number:

27175-1-AP

Size:

150ul, Concentration: 260 ug/ml by Nanodrop and 233 ug/ml by Bradford method using BSA as the standard;

Source:

Rabbit

Isotype:

IgG

Immunogen Catalog Number:

AG25690

GenBank Accession Number:

BC043484

GeneID (NCBI):

717

UNIPROT ID:

P06681

Full Name:

complement component 2

Observed MW:

70 kDa, 80 kDa

Purification Method:

Antigen affinity purification

Recommended Dilutions:

WB 1:500-1:2000

IHC 1:50-1:500

Applications

Tested Applications:

WB, IHC, ELISA

Cited Applications:

WB, IHC

Species Specificity:

human

Cited Species:

human

Note-IHC: suggested antigen retrieval with TE buffer pH 9.0; (*) Alternatively, antigen retrieval may be performed with citrate buffer pH 6.0

Positive Controls:

WB : A431 cells, HepG2 cells, Raji cells

IHC : human liver tissue,

Background Information

Complement C2 (C2) is a key component of the classical and lectin pathways of the complement system. Complement C2 deficiency is associated with an increased susceptibility to infections, particularly those caused by encapsulated bacteria.

Notable Publications

Author	Pubmed ID	Journal	Application
Phu C Duong	35150868	Insect Biochem Mol Biol	IHC
Dayan Sun	33279689	Cell Mol Gastroenterol Hepatol	WB

Storage

Storage:

Store at -20°C. Stable for one year after shipment.

Storage Buffer:

PBS with 0.02% sodium azide and 50% glycerol pH 7.3.

Aliquoting is unnecessary for -20°C storage

*** 20ul sizes contain 0.1% BSA

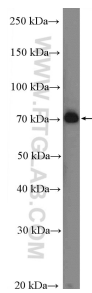
For technical support and original validation data for this product please contact:

T: 1 (888) 4PTGLAB (1-888-478-4522) (toll free in USA), or 1(312) 455-8498 (outside USA)

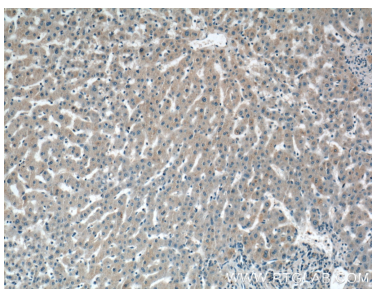
E: proteintech@ptglab.com
W: ptglab.com

This product is exclusively available under Proteintech Group brand and is not available to purchase from any other manufacturer.

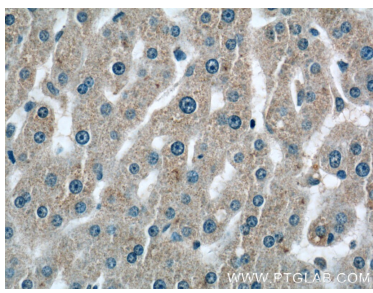
Selected Validation Data



A431 cells were subjected to SDS PAGE followed by western blot with 27175-1-AP (C2 Antibody) at dilution of 1:1000 incubated at room temperature for 1.5 hours.



Immunohistochemical analysis of paraffin-embedded human liver tissue slide using 27175-1-AP (C2 Antibody) at dilution of 1:200 (under 10x lens).



Immunohistochemical analysis of paraffin-embedded human liver tissue slide using 27175-1-AP (C2 Antibody) at dilution of 1:200 (under 40x lens).