

For Research Use Only

MSI1 Polyclonal antibody

Catalog Number: 27185-1-AP

4 Publications



Basic Information

| | | |
|--|---|---|
| Catalog Number: 27185-1-AP | GenBank Accession Number: BC146463 | Purification Method: Antigen affinity purification |
| Size: 150ul , Concentration: 400 ug/ml by Nanodrop and 300 ug/ml by Bradford method using BSA as the standard; | GeneID (NCBI): 4440 | Recommended Dilutions: WB 1:1000-1:6000 IHC 1:50-1:500 |
| Source: Rabbit | UNIPROT ID: O43347 | |
| Isotype: IgG | Full Name: musashi homolog 1 (Drosophila) | |
| Immunogen Catalog Number: AG26042 | Calculated MW: 362 aa, 39 kDa | |
| | Observed MW: 35 kDa | |

Applications

| | |
|---|--|
| Tested Applications: WB, IHC, ELISA | Positive Controls: WB : HEK-293 cells, Caco-2 cells, HEK-293T cells IHC : human gliomas tissue, |
| Cited Applications: WB, IF | |
| Species Specificity: human | |
| Cited Species: human | |

Note-IHC: suggested antigen retrieval with TE buffer pH 9.0; (*) Alternatively, antigen retrieval may be performed with citrate buffer pH 6.0

Background Information

Musashi1 (Msi1) is an RNA-binding protein expressed in neural progenitor cells and neural stem cells. The gene encoding human Msi1 encodes a 362 amino acid protein. In murine embryonic neural progenitor cells, Msi1 localizes to the cytoplasm and is downregulated during differentiation. Msi1 binds to NUMB, which encodes a membrane-associated antagonist of Notch signaling. Msi1 appears to function in the proliferation and maintenance of stem cell populations of the central nervous system. In addition to its usefulness as a marker for neural progenitor cells in normal human brains, Msi1 is also a marker for human gliomas. In rats, Msi1 is expressed in Sertoli cells of the testis and granulosa cells of the ovary.

Notable Publications

| Author | Pubmed ID | Journal | Application |
|-----------------|-----------|--------------------|-------------|
| Robert F Candia | 35592115 | Front Mol Neurosci | IF |
| Wei Jia | 29568859 | Int J Oncol | WB |
| Huaizeng Chen | 31031868 | J Cancer | WB |

Storage

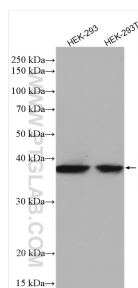
Storage:
Store at -20°C. Stable for one year after shipment.
Storage Buffer:
PBS with 0.02% sodium azide and 50% glycerol pH 7.3.
Aliquoting is unnecessary for -20°C storage

*** 20ul sizes contain 0.1% BSA

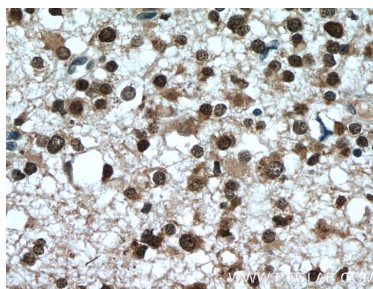
For technical support and original validation data for this product please contact:
T: 1 (888) 4PTGLAB (1-888-478-4522) (toll free in USA), or 1(312) 455-8498 (outside USA)
E: proteintech@ptglab.com
W: ptglab.com

This product is exclusively available under Proteintech Group brand and is not available to purchase from any other manufacturer.

Selected Validation Data



Various lysates were subjected to SDS PAGE followed by western blot with 27185-1-AP (MSI1 antibody) at dilution of 1:3000 incubated at room temperature for 1.5 hours.



Immunohistochemical analysis of paraffin-embedded human gliomas tissue slide using 27185-1-AP (MSI1 Antibody) at dilution of 1:200 (under 40x lens). Heat mediated antigen retrieval with Tris-EDTA buffer (pH 9.0).