

For Research Use Only

# Integrin alpha 6 Polyclonal antibody

Catalog Number: 27189-1-AP

Featured Product

25 Publications



## Basic Information

### Catalog Number:

27189-1-AP

### Size:

150ul, Concentration: 240 ug/ml by Nanodrop;

### Source:

Rabbit

### Isotype:

IgG

### Immunogen Catalog Number:

AG25835

### GenBank Accession Number:

BC136456

### GeneID (NCBI):

3655

### UNIPROT ID:

P23229

### Full Name:

integrin, alpha 6

### Calculated MW:

1073 aa, 119 kDa

### Observed MW:

110-130 kDa

### Purification Method:

Antigen affinity purification

### Recommended Dilutions:

WB 1:500-1:2000

IHC 1:500-1:2000

## Applications

### Tested Applications:

WB, IHC, ELISA

### Cited Applications:

WB, IHC, IF

### Species Specificity:

human, mouse, rat

### Cited Species:

human, mouse, rat, monkey, bovine, hamster

**Note-IHC: suggested antigen retrieval with TE buffer pH 9.0; (\*) Alternatively, antigen retrieval may be performed with citrate buffer pH 6.0**

### Positive Controls:

**WB** : A549 cells, A431 cells, mouse skin tissue, rat lung tissue, HepG2 cells

**IHC** : mouse skin tissue, human colon tissue

## Notable Publications

Author	Pubmed ID	Journal	Application
Li Wu	36184060	Vascul Pharmacol	IF
Yuka Mizuno	36311716	Front Immunol	WB
Tianyi Cheng	36336028	Exp Cell Res	WB

## Storage

### Storage:

Store at -20°C. Stable for one year after shipment.

### Storage Buffer:

PBS with 0.02% sodium azide and 50% glycerol pH 7.3.

Aliquoting is unnecessary for -20°C storage

\*\*\* 20ul sizes contain 0.1% BSA

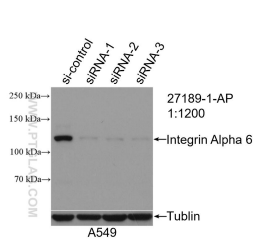
For technical support and original validation data for this product please contact:

T: 1 (888) 4PTGLAB (1-888-478-4522) (toll free in USA), or 1(312) 455-8498 (outside USA)

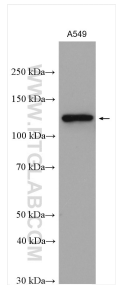
E: [proteintech@ptglab.com](mailto:proteintech@ptglab.com)  
W: [ptglab.com](http://ptglab.com)

This product is exclusively available under Proteintech Group brand and is not available to purchase from any other manufacturer.

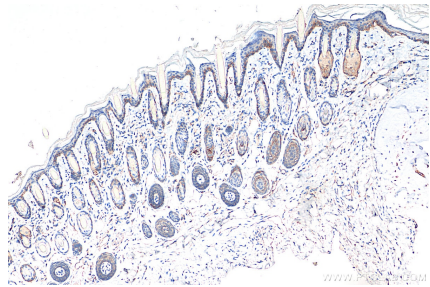
Selected Validation Data



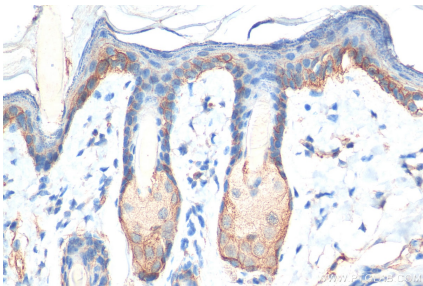
WB result of Integrin Alpha 6 antibody (27189-1-AP; 1:1200; incubated at room temperature for 1.5 hours) with sh-Control and sh-Integrin Alpha 6 transfected A549 cells.



A549 cells were subjected to SDS PAGE followed by western blot with 27189-1-AP (Integrin alpha-6 antibody) at dilution of 1:1000 incubated at room temperature for 1.5 hours.



Immunohistochemical analysis of paraffin-embedded mouse skin tissue slide using 27189-1-AP (Integrin Alpha 6 antibody) at dilution of 1:1000 (under 10x lens). Heat mediated antigen retrieval with Tris-EDTA buffer (pH 9.0).



Immunohistochemical analysis of paraffin-embedded mouse skin tissue slide using 27189-1-AP (Integrin Alpha 6 antibody) at dilution of 1:1000 (under 40x lens). Heat mediated antigen retrieval with Tris-EDTA buffer (pH 9.0).