

For Research Use Only

NHE3 Polyclonal antibody

Catalog Number: 27190-1-AP

11 Publications



Basic Information

Catalog Number:

27190-1-AP

Size:

150ul, Concentration: 1200 µg/ml by Nanodrop and 567 µg/ml by Bradford method using BSA as the standard;

Source:

Rabbit

Isotype:

IgG

Immunogen Catalog Number:

AG25637

GenBank Accession Number:

BC101669

GeneID (NCBI):

6550

UNIPROT ID:

P48764

Full Name:

solute carrier family 9 (sodium/hydrogen exchanger), member 3

Calculated MW:

834 aa, 93 kDa

Observed MW:

80-100 kDa

Purification Method:

Antigen affinity purification

Recommended Dilutions:

WB 1:500-1:2000

IP 0.5-4.0 µg for 1.0-3.0 mg of total protein lysate

IHC 1:50-1:500

Applications

Tested Applications:

WB, IHC, IP, ELISA

Cited Applications:

WB, IHC, IF

Species Specificity:

human, mouse

Cited Species:

human, mouse, pig

Note-IHC: suggested antigen retrieval with TE buffer pH 9.0; (*) Alternatively, antigen retrieval may be performed with citrate buffer pH 6.0

Positive Controls:

WB : mouse small intestine tissue,

IP : mouse kidney tissue,

IHC : mouse kidney tissue,

Background Information

SLC9A3, also known as NHE3, belongs to the sodium hydrogen exchange protein family (NHE) and is mainly responsible for regulating the concentration of sodium and hydrogen ions inside and outside the cell. SLC9A3 is a Major apical Na⁺/H⁺ exchanger in kidney and intestine, playing an important role in renal and intestine Na⁺ absorption and blood pressure regulation (PMID:24622516, 2635877). Mutations in SLC9A3 cause Congenital Sodium Diarrhea (PMID: 26358773, 31276831).

Notable Publications

Author	Pubmed ID	Journal	Application
Dingfa Wang	34109234	Front Vet Sci	IHC
Jian Fang	35297435	Food Funct	WB
Masahiro Koizumi	31352823	Hypertension	WB

Storage

Storage:

Store at -20°C. Stable for one year after shipment.

Storage Buffer:

PBS with 0.02% sodium azide and 50% glycerol pH 7.3.

Aliquoting is unnecessary for -20°C storage

*** 20ul sizes contain 0.1% BSA

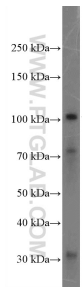
For technical support and original validation data for this product please contact:

T: 1 (888) 4PTGLAB (1-888-478-4522) (toll free in USA), or 1(312) 455-8498 (outside USA)

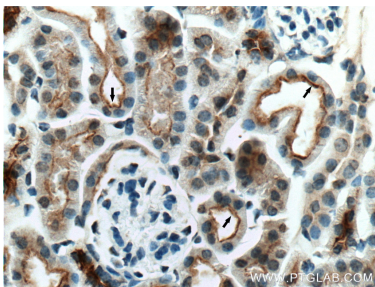
E: proteintech@ptglab.com
W: ptglab.com

This product is exclusively available under Proteintech Group brand and is not available to purchase from any other manufacturer.

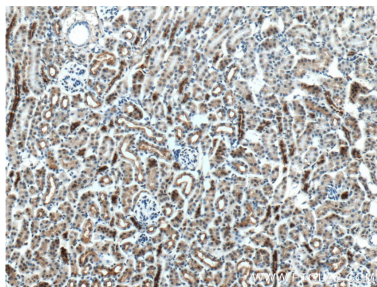
Selected Validation Data



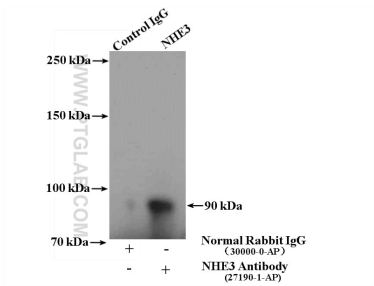
mouse small intestine tissue were subjected to SDS PAGE followed by western blot with 27190-1-AP (NHE3 antibody at dilution of 1:1000 incubated at room temperature for 1.5 hours.



Immunohistochemical analysis of paraffin-embedded mouse kidney tissue slide using 27190-1-AP (NHE3 antibody at dilution of 1:200 (under 40x lens). heat mediated antigen retrieval with Tris-EDTA buffer (pH9). Arrows show brush border.



Immunohistochemical analysis of paraffin-embedded mouse kidney tissue slide using 27190-1-AP (NHE3 antibody at dilution of 1:200 (under 10x lens). Heat mediated antigen retrieval with Tris-EDTA buffer (pH 9.0).



IP result of anti-NHE3 (IP:27190-1-AP, 4ug; Detection:27190-1-AP 1:1000) with mouse kidney tissue lysate 4000ug.