

For Research Use Only

EHF Polyclonal antibody, PBS Only

Catalog Number: 27195-1-PBS

Featured Product



Basic Information

Catalog Number:

27195-1-PBS

Size:

100ug, Concentration: 1 mg/ml by Nanodrop;

Source:

Rabbit

Isotype:

IgG

Immunogen Catalog Number:

AG25885

GenBank Accession Number:

BC038995

GeneID (NCBI):

26298

UNIPROT ID:

Q9NZC4

Full Name:

ets homologous factor

Calculated MW:

35 kDa

Observed MW:

35 kDa

Purification Method:

Antigen affinity purification

Applications

Tested Applications:

WB, IHC, Indirect ELISA

Species Specificity:

human

Background Information

ETS homologous factor (EHF) is also named Epithelium-specific Ets transcription factor 3 (ESE-3), ESE3B and ESEJ. EHF is a member of the E26 transformation-specific (ETS) gene superfamily (PMID: 12894586). EHF as a tumour suppressor in PDAC. In PDAC, EHF promotes E-cadherin expression and suppresses epithelial-mesenchymal transition (PMID: 27923832). EHF deficiency induces the conversion and expansion of Treg cells and MDSCs by inhibiting TGFβ1 and GM-CSF secretion (PMID: 30733283). In prostate cancer, EHF plays a vital role in the inhibition of cell-intrinsic CSCs signal by suppressing STAT3 and repressing the expression of TWIST1, ZEB2, BMI1 and POU5F1 (PMID: 27732936, PMID: 22505649). EHF not only plays a cell autonomous role in regulating CSC stemness but also has important functions in regulating the sensitivity to a pro-CSC stimulus from the PSC niche (PMID: 33674341).

Storage

Storage:

Store at -80°C.

Storage Buffer:

PBS only, pH7.3

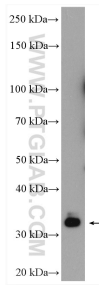
For technical support and original validation data for this product please contact:

T: 1 (888) 4PTGLAB (1-888-478-4522) (toll free in USA), or 1(312) 455-8498 (outside USA)

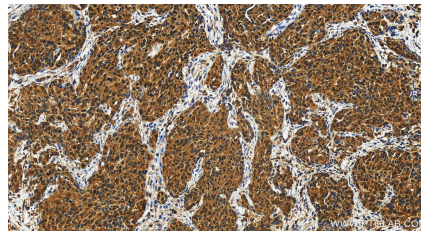
E: proteintech@ptglab.com
W: ptglab.com

This product is exclusively available under Proteintech Group brand and is not available to purchase from any other manufacturer.

Selected Validation Data



LNCaP cells were subjected to SDS PAGE followed by western blot with 27195-1-AP (EHF antibody) at dilution of 1:1000 incubated at room temperature for 1.5 hours. This data was developed using the same antibody clone with 27195-1-PBS in a different storage buffer formulation.



Immunohistochemical analysis of paraffin-embedded human ovary cancer tissue slide using 27195-1-AP (EHF antibody) at dilution of 1:200 (under 20x lens). Heat mediated antigen retrieval with Tris-EDTA buffer (pH 9.0). This data was developed using the same antibody clone with 27195-1-PBS in a different storage buffer formulation.