

For Research Use Only

PIM1 Polyclonal antibody

Catalog Number: 27196-1-AP



Basic Information

Catalog Number:

27196-1-AP

Size:

150ul , Concentration: 700 µg/ml by Nanodrop;

Source:

Rabbit

Isotype:

IgG

Immunogen Catalog Number:

AG25743

GenBank Accession Number:

BC020224

GeneID (NCBI):

5292

UNIPROT ID:

P11309

Full Name:

pim-1 oncogene

Calculated MW:

45 kDa

Observed MW:

30-40 kDa

Purification Method:

Antigen affinity purification

Recommended Dilutions:

WB 1:500-1:1000

Applications

Tested Applications:

WB, ELISA

Species Specificity:

human, mouse

Positive Controls:

WB : 3T3-L1 cells, LNCaP cells

Background Information

PIM1 belongs to the Ser/Thr protein kinase family and the Pim subfamily. This family includes PIM1, PIM2, and PIM3, which share high sequence and structural similarity. PIM1 is a serine/threonine protein kinase that significantly promotes cell survival and proliferation, providing a selective advantage for tumorigenesis. PIM1 is expressed primarily in cells of the hematopoietic and germline lineages (PMID: 16186805).

Storage

Storage:

Store at -20°C. Stable for one year after shipment.

Storage Buffer:

PBS with 0.02% sodium azide and 50% glycerol, pH7.3

Aliquoting is unnecessary for -20°C storage

*** 20ul sizes contain 0.1% BSA

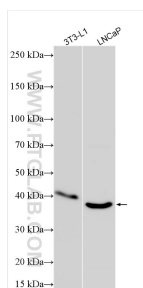
For technical support and original validation data for this product please contact:

T: 1 (888) 4PTGLAB (1-888-478-4522) (toll free in USA), or 1(312) 455-8498 (outside USA)

E: proteintech@ptglab.com
W: ptglab.com

This product is exclusively available under Proteintech Group brand and is not available to purchase from any other manufacturer.

Selected Validation Data



Various lysates were subjected to SDS PAGE followed by western blot with 27196-1-AP (PIM1 antibody) at dilution of 1:800 incubated at room temperature for 1.5 hours.