

For Research Use Only

LMBRD1 Polyclonal antibody

Catalog Number: 27203-1-AP



Basic Information

Catalog Number:

27203-1-AP

Size:

150ul , Concentration: 450 ug/ml by Nanodrop and 200 ug/ml by Bradford method using BSA as the standard;

Source:

Rabbit

Isotype:

IgG

Immunogen Catalog Number:

AG24478

GenBank Accession Number:

BC010360

GeneID (NCBI):

55788

UNIPROT ID:

Q9NUN5

Full Name:

LMBR1 domain containing 1

Calculated MW:

540 aa, 61 kDa

Observed MW:

47 kDa

Purification Method:

Antigen affinity purification

Recommended Dilutions:

WB 1:200-1:1000

Applications

Tested Applications:

WB, ELISA

Species Specificity:

human, mouse

Positive Controls:

WB : mouse small intestine tissue,

Storage

Storage:

Store at -20°C. Stable for one year after shipment.

Storage Buffer:

PBS with 0.02% sodium azide and 50% glycerol, pH7.3

Aliquoting is unnecessary for -20°C storage

*** 20ul sizes contain 0.1% BSA

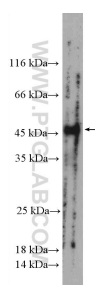
For technical support and original validation data for this product please contact:

T: 1 (888) 4PTGLAB (1-888-478-4522) (toll free in USA), or 1(312) 455-8498 (outside USA)

E: proteintech@ptglab.com
W: ptglab.com

This product is exclusively available under Proteintech Group brand and is not available to purchase from any other manufacturer.

Selected Validation Data



mouse small intestine tissue were subjected to SDS PAGE followed by western blot with 27203-1-AP (LMBRD1 Antibody) at dilution of 1:100 incubated at room temperature for 1.5 hours.