

For Research Use Only

BDH2 Polyclonal antibody

Catalog Number: 27207-1-AP

Featured Product

3 Publications



Basic Information

Catalog Number: 27207-1-AP	GenBank Accession Number: BC095414	Purification Method: Antigen affinity purification
Size: 150ul, Concentration: 200 µg/ml by Nanodrop and 200 µg/ml by Bradford method using BSA as the standard;	GeneID (NCBI): 56898	Recommended Dilutions: WB 1:1000-1:4000 IHC 1:100-1:400
Source: Rabbit	Full Name: 3-hydroxybutyrate dehydrogenase, type 2	
Isotype: IgG	Observed MW: 27 kDa	
Immunogen Catalog Number: AG24934		

Applications

Tested Applications: IHC, WB, ELISA	Positive Controls:
Cited Applications: IHC, WB	WB: BxPC-3 cells, HeLa cells
Species Specificity: human	IHC: human breast cancer tissue,
Cited Species: human, mouse	
Note-IHC: suggested antigen retrieval with TE buffer pH 9.0; (*) Alternatively, antigen retrieval may be performed with citrate buffer pH 6.0	

Background Information

Notable Publications

Author	Pubmed ID	Journal	Application
Xiaofei Gao	35499082	J Clin Invest	WB
Jia-Zhou Liu	32605589	J Exp Clin Cancer Res	IHC
Tianxiao Yang	29618368	J Hematol Oncol	WB, IHC

Storage

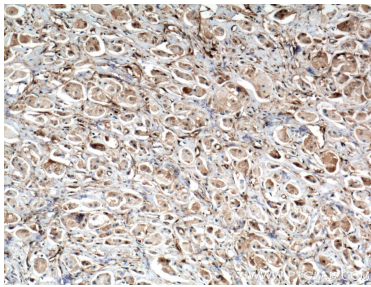
Storage:
Store at -20°C. Stable for one year after shipment.
Storage Buffer:
PBS with 0.02% sodium azide and 50% glycerol pH 7.3.
Aliquoting is unnecessary for -20°C storage

*** 20ul sizes contain 0.1% BSA

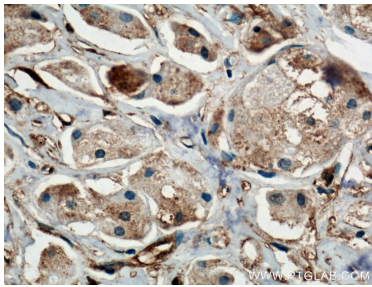
For technical support and original validation data for this product please contact:
T: 1 (888) 4PTGLAB (1-888-478-4522) (toll free in USA), or 1(312) 455-8498 (outside USA)
E: proteintech@ptglab.com
W: ptglab.com

This product is exclusively available under Proteintech Group brand and is not available to purchase from any other manufacturer.

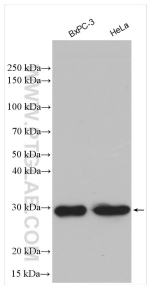
Selected Validation Data



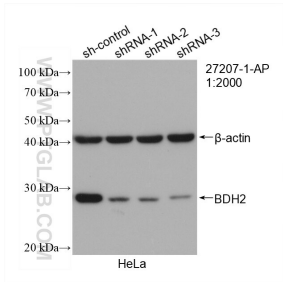
Immunohistochemical analysis of paraffin-embedded human breast cancer tissue slide using 27207-1-AP (BDH2 antibody) at dilution of 1:200 (under 10x lens. Heat mediated antigen retrieval with Tris-EDTA buffer (pH 9.0)).



Immunohistochemical analysis of paraffin-embedded human breast cancer tissue slide using 27207-1-AP (BDH2 antibody) at dilution of 1:200 (under 40x lens. Heat mediated antigen retrieval with Tris-EDTA buffer (pH 9.0)).



Various lysates were subjected to SDS PAGE followed by western blot with 27207-1-AP (BDH2 antibody) at dilution of 1:2000 incubated at room temperature for 1.5 hours.



WB result of BDH2 antibody (27207-1-AP; 1:2000; incubated at room temperature for 1.5 hours) with sh-Control and sh-BDH2 transfected HeLa cells.



Various lysates were subjected to SDS PAGE followed by western blot with 27207-1-AP (BDH2 antibody) at dilution of 1:2000 incubated at room temperature for 1.5 hours.