

For Research Use Only

KIF2A Polyclonal antibody

Catalog Number: 27218-1-AP

Featured Product

1 Publications



Basic Information

Catalog Number:

27218-1-AP

Size:

150ul, Concentration: 1100 ug/ml by Nanodrop and 533 ug/ml by Bradford method using BSA as the standard;

Source:

Rabbit

Isotype:

IgG

Immunogen Catalog Number:

AG25692

GenBank Accession Number:

BC031828

GeneID (NCBI):

3796

UNIPROT ID:

O00139

Full Name:

kinesin heavy chain member 2A

Calculated MW:

679 aa, 77 kDa

Observed MW:

80 kDa~100 kDa

Purification Method:

Antigen affinity purification

Recommended Dilutions:

WB 1:500-1:2000

IHC 1:50-1:500

IF/ICC 1:50-1:500

Applications

Tested Applications:

WB, IHC, IF/ICC, ELISA

Cited Applications:

IHC

Species Specificity:

human, mouse

Cited Species:

human

Note-IHC: suggested antigen retrieval with TE buffer pH 9.0; (*) Alternatively, antigen retrieval may be performed with citrate buffer pH 6.0

Positive Controls:

WB : Jurkat cells, HeLa cells

IHC : mouse brain tissue,

IF/ICC : A549 cells,

Background Information

Kinesin Family Member 2A (KIF2A), also known as Kinesin-2, is a member of the kinesin-13 superfamily protein. KIF2A is a microtubule-depolymerizing kinesin motor protein with essential roles in neural progenitor division and axonal pruning during brain development. KIF2A is involved in microtubule depolymerization at minus ends of the spindle to generate pole-migration forces for chromosome movement. KIF2A is a crucial factor in the invasion and metastasis of various tumors, such as gastric cancer(PMID: 32801897), hepatocellular carcinoma(PMID: 36277155).

Notable Publications

Author	Pubmed ID	Journal	Application
Hideko Hoshina	38447546	Pathobiology	IHC

Storage

Storage:

Store at -20°C. Stable for one year after shipment.

Storage Buffer:

PBS with 0.02% sodium azide and 50% glycerol pH 7.3.

Aliquoting is unnecessary for -20°C storage

*** 20ul sizes contain 0.1% BSA

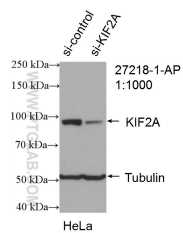
For technical support and original validation data for this product please contact:

T: 1 (888) 4PTGLAB (1-888-478-4522) (toll free in USA), or 1(312) 455-8498 (outside USA)

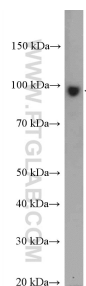
E: proteintech@ptglab.com
W: ptglab.com

This product is exclusively available under Proteintech Group brand and is not available to purchase from any other manufacturer.

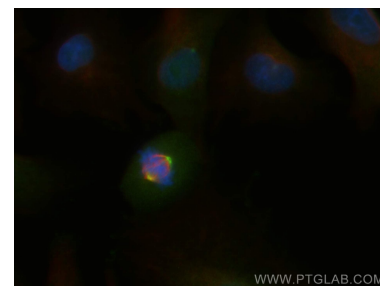
Selected Validation Data



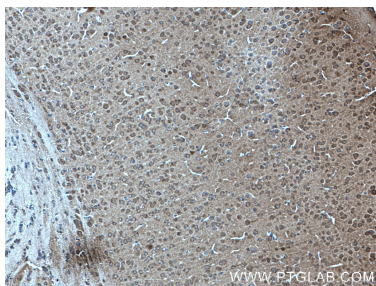
WB result of KIF2A antibody (27218-1-AP; 1:1000; incubated at room temperature for 1.5 hours) with sh-Control and sh-KIF2A transfected HeLa cells.



Jurkat cells were subjected to SDS PAGE followed by western blot with 27218-1-AP (KIF2A antibody) at dilution of 1:1000 incubated at room temperature for 1.5 hours.



Immunofluorescent analysis of (4% PFA) fixed A549 cells using KIF2A antibody (27218-1-AP) at dilution of 1:200 and CoraLite®488-Conjugated Goat Anti-Rabbit IgG(H+L), Alpha Tubulin antibody (66031-1-Ig, Clone: 1E4C11, red).



Immunohistochemical analysis of paraffin-embedded mouse brain tissue slide using 27218-1-AP (KIF2A antibody) at dilution of 1:200 (under 10x lens. Heat mediated antigen retrieval with Tris-EDTA buffer (pH 9.0).