

For Research Use Only

Integrin alpha-5/CD49e Polyclonal antibody

Catalog Number: 27224-1-AP

Featured Product

3 Publications



Basic Information

Catalog Number:

27224-1-AP

Size:

150ul, Concentration: 350 ug/ml by Nanodrop and 300 ug/ml by Bradford method using BSA as the standard;

Source:

Rabbit

Isotype:

IgG

Immunogen Catalog Number:

AG26098

GenBank Accession Number:

NM_002205

GeneID (NCBI):

3678

Full Name:

integrin, alpha 5 (fibronectin receptor, alpha polypeptide)

Calculated MW:

115 kDa

Observed MW:

135-150 kDa

Purification Method:

Antigen affinity purification

Recommended Dilutions:

WB: 1:1000-1:8000

IP: 0.5-4.0 ug for 1.0-3.0 mg of total protein lysate

IHC: 1:50-1:500

Applications

Tested Applications:

WB, IHC, IP, ELISA

Cited Applications:

WB, IHC

Species Specificity:

human

Cited Species:

human

Note-IHC: suggested antigen retrieval with TE buffer pH 9.0; (*) Alternatively, antigen retrieval may be performed with citrate buffer pH 6.0

Positive Controls:

WB: A549 cells, HAP1 cells, HeLa cells, human placenta tissue, U2OS cells

IP: human placenta tissue,

IHC: human placenta tissue,

Notable Publications

Author	Pubmed ID	Journal	Application
Pengcheng Zhou	39099892	Biomater Res	WB
Chuanpeng Zhang	38355583	Mol Cancer	WB
Beiyuan Hu	36304515	J Clin Transl Hepatol	IHC

Storage

Storage:

Store at -20°C. Stable for one year after shipment.

Storage Buffer:

PBS with 0.02% sodium azide and 50% glycerol, pH7.3

Aliquoting is unnecessary for -20°C storage

*** 20ul sizes contain 0.1% BSA

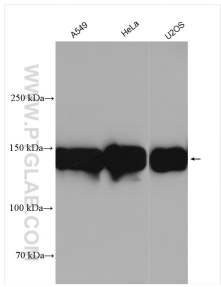
For technical support and original validation data for this product please contact:

T: 1 (888) 4PTGLAB (1-888-478-4522) (toll free in USA), or 1(312) 455-8498 (outside USA)

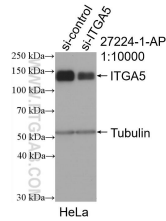
E: proteintech@ptglab.com
W: ptglab.com

This product is exclusively available under Proteintech Group brand and is not available to purchase from any other manufacturer.

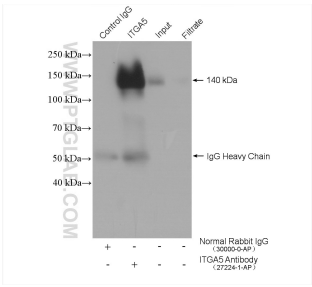
Selected Validation Data



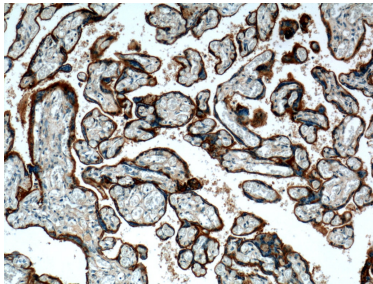
Various lysates were subjected to SDS PAGE followed by western blot with 27224-1-AP (Integrin alpha-5 antibody) at dilution of 1:4000 incubated at room temperature for 1.5 hours.



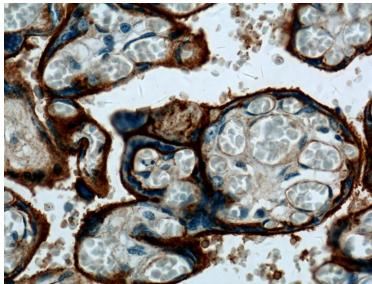
WB result of Integrin alpha-5 antibody (27224-1-AP; 1:10000; incubated at room temperature for 1.5 hours) with sh-Control and sh-Integrin alpha-5 transfected HeLa cells.



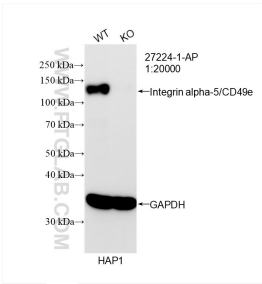
IP result of anti-Integrin Alpha 5 (IP:27224-1-AP, 4ug; Detection:27224-1-AP 1:1000) with human placenta tissue lysate 2600 ug.



Immunohistochemical analysis of paraffin-embedded human placenta tissue slide using 27224-1-AP (Integrin alpha-5 antibody) at dilution of 1:200 (under 10x lens).



Immunohistochemical analysis of paraffin-embedded human placenta tissue slide using 27224-1-AP (Integrin alpha-5 antibody) at dilution of 1:200 (under 40x lens).



WB result of Integrin alpha-5/CD49e antibody (27224-1-AP; 1:20000; room temperature for 1.5 hours) with wild-type and Integrin alpha-5/CD49e knockout HAP1 cells.