

For Research Use Only

FTO Polyclonal antibody, PBS Only

Catalog Number: 27226-1-PBS

Featured Product



Basic Information

Catalog Number:

27226-1-PBS

Size:

100ug, Concentration: 1 mg/ml by Nanodrop;

Source:

Rabbit

Isotype:

IgG

Immunogen Catalog Number:

AG26095

GenBank Accession Number:

NM_001080432

GeneID (NCBI):

79068

UNIPROT ID:

Q9COB1

Full Name:

fat mass and obesity associated

Calculated MW:

58 kDa

Observed MW:

58 kDa

Purification Method:

Antigen affinity purification

Applications

Tested Applications:

WB, IHC, IF-P, FC (Intra), Indirect ELISA

Species Specificity:

human

Background Information

Fat mass and obesity-associated protein (FTO) has efficient oxidative demethylation activity targeting the abundant N6-methyladenosine (m6A) residues in RNA in vitro. Variants in the FTO (fat mass and obesity associated) gene are associated with increased body mass index in humans.

Storage

Storage:

Store at -80°C.

Storage Buffer:

PBS Only

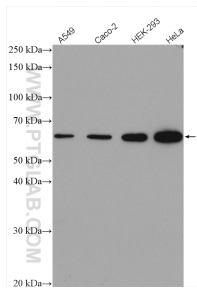
For technical support and original validation data for this product please contact:

T: 1 (888) 4PTGLAB (1-888-478-4522) (toll free in USA), or 1(312) 455-8498 (outside USA)

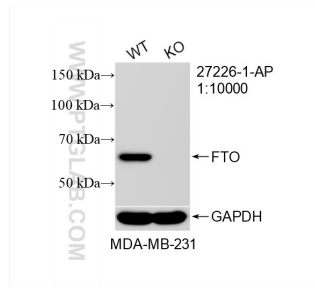
E: proteintech@ptglab.com
W: ptglab.com

This product is exclusively available under Proteintech Group brand and is not available to purchase from any other manufacturer.

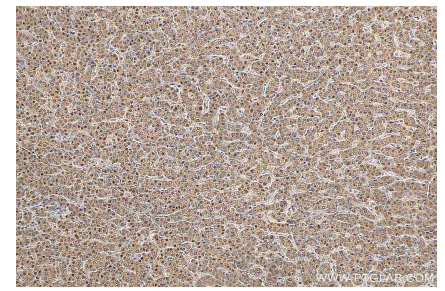
Selected Validation Data



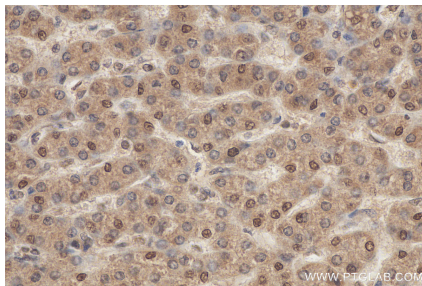
Various lysates were subjected to SDS PAGE followed by western blot with 27226-1-AP (FTO antibody) at dilution of 1:3000 incubated at room temperature for 1.5 hours. This data was developed using the same antibody clone with 27226-1-PBS in a different storage buffer formulation.



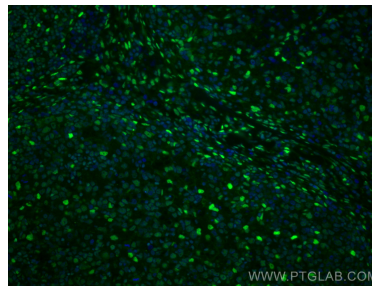
WB result of FTO antibody (27226-1-AP; 1:10000; room temperature for 1.5 hours) with wild-type and FTO knockout MDA-MB-231 cells. This data was developed using the same antibody clone with 27226-1-PBS in a different storage buffer formulation.



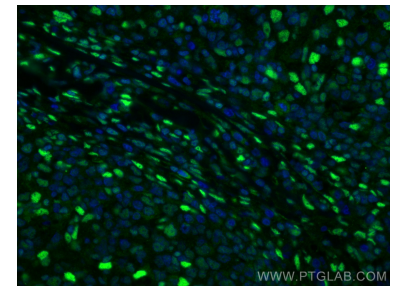
Immunohistochemical analysis of paraffin-embedded human liver cancer tissue slide using 27226-1-AP (FTO antibody) at dilution of 1:400 (under 10x lens). Heat mediated antigen retrieval with Tris-EDTA buffer (pH 9.0). This data was developed using the same antibody clone with 27226-1-PBS in a different storage buffer formulation.



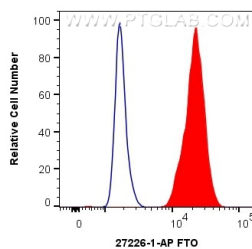
Immunohistochemical analysis of paraffin-embedded human liver cancer tissue slide using 27226-1-AP (FTO antibody) at dilution of 1:400 (under 40x lens). Heat mediated antigen retrieval with Tris-EDTA buffer (pH 9.0). This data was developed using the same antibody clone with 27226-1-PBS in a different storage buffer formulation.



Immunofluorescent analysis of (4% PFA) fixed human lymphoma tissue using FTO antibody (27226-1-AP) at dilution of 1:200 and CoraLite@488-Conjugated AffiniPure Goat Anti-Rabbit IgG(H+L). This data was developed using the same antibody clone with 27226-1-PBS in a different storage buffer formulation.



Immunofluorescent analysis of (4% PFA) fixed human lymphoma tissue using FTO antibody (27226-1-AP) at dilution of 1:200 and CoraLite@488-Conjugated AffiniPure Goat Anti-Rabbit IgG(H+L). This data was developed using the same antibody clone with 27226-1-PBS in a different storage buffer formulation.



1X10⁶ SH-SY5Y cells were intracellularly stained with 0.4 ug Anti-Human FTO (27226-1-AP) and CoraLite@488-Conjugated AffiniPure Goat Anti-Rabbit IgG(H+L) at dilution 1:1000 (red), or 0.4 ug Isotype Control. Cells were fixed with 4% PFA and permeabilized with Flow Cytometry Perm Buffer (PF00011-C). This data was developed using the same antibody clone with 27226-1-PBS in a different storage buffer formulation.