

For Research Use Only

ASXL2 Polyclonal antibody

Catalog Number: 27229-1-AP



Basic Information

Catalog Number:

27229-1-AP

Size:

150ul , Concentration: 600 ug/ml by Nanodrop;

Source:

Rabbit

Isotype:

IgG

Immunogen Catalog Number:

AG24402

GenBank Accession Number:

BC042999

GeneID (NCBI):

55252

UNIPROT ID:

Q76L83

Full Name:

additional sex combs like 2 (Drosophila)

Calculated MW:

154 kDa

Observed MW:

154-230 kDa

Purification Method:

Antigen affinity purification

Recommended Dilutions:

WB 1:500-1:2000

Applications

Tested Applications:

WB, ELISA

Species Specificity:

human

Positive Controls:

WB : HEK-293T cells, Jurkat cells, U2OS cells

Background Information

ASXL2 is an epigenetic regulator associated with various tumors including colorectal cancer, breast cancer, and myeloid leukemia. ASXL1, ASXL2 and ASXL3 are human homologs of Drosophila Asx (Additional sex combs) and function as epigenetic regulators through recruitment of Polycomb group repressor complexes (PRC) and Trithorax group activator complexes. ASXL proteins can interact with BAP1, NCOA1, EZH2, WTIP and nuclear receptors, which suggests diverse functions of ASXL family members in epigenetic and transcriptional regulation. (PMID: 30093396, PMID: 34692512)

Storage

Storage:

Store at -20°C. Stable for one year after shipment.

Storage Buffer:

PBS with 0.02% sodium azide and 50% glycerol pH 7.3.

Aliquoting is unnecessary for -20°C storage

*** 20ul sizes contain 0.1% BSA

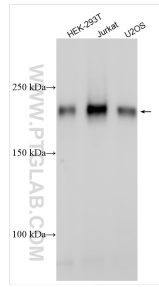
For technical support and original validation data for this product please contact:

T: 1 (888) 4PTGLAB (1-888-478-4522) (toll free in USA), or 1(312) 455-8498 (outside USA)

E: proteintech@ptglab.com
W: ptglab.com

This product is exclusively available under Proteintech Group brand and is not available to purchase from any other manufacturer.

Selected Validation Data



Various lysates were subjected to SDS PAGE followed by western blot with 27229-1-AP (ASXL2 antibody) at dilution of 1:1000 incubated at room temperature for 1.5 hours.