

For Research Use Only

SELENBP1 Polyclonal antibody

Catalog Number: 27230-1-AP

2 Publications



Basic Information

Catalog Number:

27230-1-AP

Size:

150ul, Concentration: 300 ug/ml by Nanodrop and 233 ug/ml by Bradford method using BSA as the standard;

Source:

Rabbit

Isotype:

IgG

Immunogen Catalog Number:

AG20967

GenBank Accession Number:

BC009084

GeneID (NCBI):

8991

UNIPROT ID:

Q13228

Full Name:

selenium binding protein 1

Calculated MW:

52 kDa

Observed MW:

45 kDa, 52 kDa, 56 kDa

Purification Method:

Antigen affinity purification

Recommended Dilutions:

WB 1:500-1:3000

IHC 1:50-1:500

Applications

Tested Applications:

WB, IHC, ELISA

Cited Applications:

WB, IF

Species Specificity:

human, mouse

Cited Species:

human, mouse

Positive Controls:

WB : mouse liver tissue, A549 cells

IHC : human liver tissue, human colon tissue, human lung cancer tissue

Note-IHC: suggested antigen retrieval with TE buffer pH 9.0; (*) Alternatively, antigen retrieval may be performed with citrate buffer pH 6.0

Background Information

SELENBP1 (selenium binding protein 1, SBP1), also known as LPSB or SP56, is a 472 amino acid peripheral membrane protein that binds selenium covalently. Selenium, an essential trace element, has been shown to have an anti-cancer effect. Many reports have described a relationship between insufficient selenium intake and increased risk of cancer. Moreover, the expression of SELENBP1 has been shown to be decreased in several tumors including cancers of the prostate, lungs, colon, and ovary (PMID: 21143902, 20332323, 18272210). SELENBP1 has four isoforms with the molecular mass of 56kD, 52kD and 45kD.

Notable Publications

Author	Pubmed ID	Journal	Application
Cheng Zhu	36253721	BMC Gastroenterol	WB
Na Zheng	38867036	Reprod Sci	IF

Storage

Storage:

Store at -20°C. Stable for one year after shipment.

Storage Buffer:

PBS with 0.02% sodium azide and 50% glycerol pH 7.3.

Aliquoting is unnecessary for -20°C storage

*** 20ul sizes contain 0.1% BSA

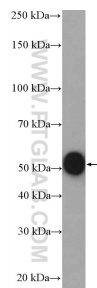
For technical support and original validation data for this product please contact:

T: 1 (888) 4PTGLAB (1-888-478-4522) (toll free in USA), or 1(312) 455-8498 (outside USA)

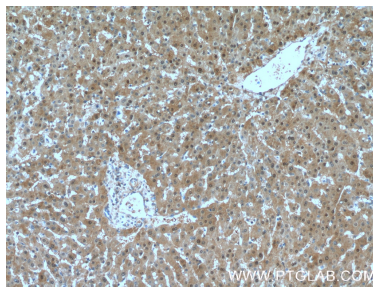
E: proteintech@ptglab.com
W: ptglab.com

This product is exclusively available under Proteintech Group brand and is not available to purchase from any other manufacturer.

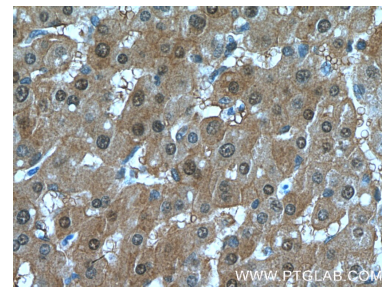
Selected Validation Data



mouse liver tissue were subjected to SDS PAGE followed by western blot with 27230-1-AP (SELENBP1 antibody) at dilution of 1:1500 incubated at room temperature for 1.5 hours.



Immunohistochemical analysis of paraffin-embedded human liver tissue slide using 27230-1-AP (SELENBP1 Antibody) at dilution of 1:200 (under 10x lens).



Immunohistochemical analysis of paraffin-embedded human liver tissue slide using 27230-1-AP (SELENBP1 Antibody) at dilution of 1:200 (under 40x lens).