

For Research Use Only

Cyclin A2 Polyclonal antibody

Catalog Number: 27242-1-AP

Featured Product

5 Publications



Basic Information

Catalog Number:

27242-1-AP

Size:

150ul, Concentration: 550 ug/ml by Nanodrop and 367 ug/ml by Bradford method using BSA as the standard;

Source:

Rabbit

Isotype:

IgG

Immunogen Catalog Number:

AG25666

GenBank Accession Number:

BC104783

GeneID (NCBI):

890

UNIPROT ID:

P20248

Full Name:

cyclin A2

Calculated MW:

432 aa, 49 kDa

Observed MW:

49 kDa

Purification Method:

Antigen affinity purification

Recommended Dilutions:

WB 1:500-1:2000

Applications

Tested Applications:

WB, ELISA

Cited Applications:

WB

Species Specificity:

human

Cited Species:

human

Positive Controls:

WB : HEK-293 cells, HeLa cells, U2OS cells, Jurkat cells

Notable Publications

Author	Pubmed ID	Journal	Application
Wushuang Du	33931924	Cancer Sci	WB
Jie Yang	30872078	Cancer Lett	WB
Yuqi Zhou	33576447	Int J Mol Med	WB

Storage

Storage:

Store at -20°C. Stable for one year after shipment.

Storage Buffer:

PBS with 0.02% sodium azide and 50% glycerol pH 7.3.

Aliquoting is unnecessary for -20°C storage

*** 20ul sizes contain 0.1% BSA

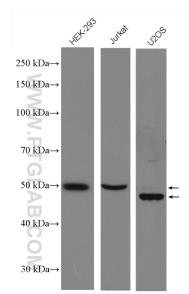
For technical support and original validation data for this product please contact:

T: 1 (888) 4PTGLAB (1-888-478-4522) (toll free in USA), or 1(312) 455-8498 (outside USA)

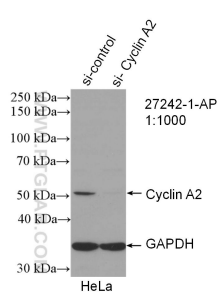
E: proteintech@ptglab.com
W: ptglab.com

This product is exclusively available under Proteintech Group brand and is not available to purchase from any other manufacturer.

Selected Validation Data



Various lysates were subjected to SDS PAGE followed by western blot with 27242-1-AP (Cyclin A2 antibody) at dilution of 1:1000 incubated at room temperature for 1.5 hours.



WB result of Cyclin A2 antibody (27242-1-AP; 1:1000; incubated at room temperature for 1.5 hours) with sh-Control and sh-Cyclin A2 transfected HeLa cells.