

For Research Use Only

ECE1 Polyclonal antibody

Catalog Number: 27245-1-AP



Basic Information

Catalog Number: 27245-1-AP	GenBank Accession Number: BC126257	Purification Method: Antigen affinity purification
Size: 150ul , Concentration: 270 µg/ml by Nanodrop;	GeneID (NCBI): 1889	Recommended Dilutions: WB 1:500-1:2000
Source: Rabbit	Full Name: endothelin converting enzyme 1	
Isotype: IgG	Observed MW: 87-110 kDa	
Immunogen Catalog Number: AG26124		

Applications

Tested Applications: WB, ELISA	Positive Controls: WB : A549 cells, HUVEC cells, MCF-7 cells
Species Specificity: human	

Background Information

ECE1, Endothelin-converting enzyme 1, also known as ECE. It is located in cell membrane, and it has 4 isoforms. All isoforms are expressed in umbilical vein endothelial cells, polynuclear neutrophils, fibroblasts, atrium cardiomyocytes and ventricles. Isoforms A, B and C are also expressed in placenta, lung, heart, adrenal gland and pheochromocytoma; isoforms A and C in liver, testis and small intestine; isoform B, C and D in endothelial cells and umbilical vein smooth muscle cells; isoforms C and D in saphenous vein cells, and isoform C in kidney (PMID: 9396733). The protein encoded by this gene is involved in proteolytic processing of endothelin precursors to biologically active peptides. Mutations in this gene are associated with Hirschsprung disease, cardiac defects and autonomic dysfunction. Alternatively spliced transcript variants encoding different isoforms have been noted for this gene. The calculated molecular weight of ECE1 is 87 kDa, as a result of glycosylation, the apparent molecular mass of ECE1 is approximately 120-135 kDa.

Storage

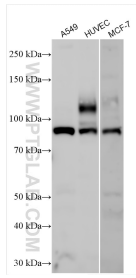
Storage:
Store at -20°C. Stable for one year after shipment.
Storage Buffer:
PBS with 0.02% sodium azide and 50% glycerol pH 7.3.
Aliquoting is unnecessary for -20°C storage

*** 20ul sizes contain 0.1% BSA

For technical support and original validation data for this product please contact:
T: 1 (888) 4PTGLAB (1-888-478-4522) (toll free in USA), or 1(312) 455-8498 (outside USA) E: proteintech@ptglab.com W: ptglab.com

This product is exclusively available under Proteintech Group brand and is not available to purchase from any other manufacturer.

Selected Validation Data



Various lysates were subjected to SDS PAGE followed by western blot with 27245-1-AP (ECE1 antibody) at dilution of 1:1000 incubated at room temperature for 1.5 hours.