

For Research Use Only

# RICTOR Polyclonal antibody

Catalog Number: 27248-1-AP

Featured Product

24 Publications



## Basic Information

Catalog Number:

27248-1-AP

Size:

150ul, Concentration: 700 ug/ml by Nanodrop;

Source:

Rabbit

Isotype:

IgG

Immunogen Catalog Number:

AG25649

GenBank Accession Number:

BC029608

GeneID (NCBI):

253260

UNIPROT ID:

Q6R327

Full Name:

rapamycin-insensitive companion of mTOR

Calculated MW:

192 kDa

Observed MW:

192 kDa

Purification Method:

Antigen affinity purification

Recommended Dilutions:

WB 1:1000-1:8000

IHC 1:50-1:500

IF/ICC 1:50-1:500

## Applications

Tested Applications:

WB, IHC, IF/ICC, ELISA

Cited Applications:

WB, IHC, IF, IP

Species Specificity:

human, mouse

Cited Species:

human, mouse, rat

**Note-IHC: suggested antigen retrieval with TE buffer pH 9.0; (\*) Alternatively, antigen retrieval may be performed with citrate buffer pH 6.0**

Positive Controls:

WB : HEK-293 cells, NIH/3T3 cells, HeLa cells, HepG2 cells

IHC : human lung cancer tissue, mouse testis tissue

IF/ICC : NIH/3T3 cells, HeLa cells

## Notable Publications

Author	Pubmed ID	Journal	Application
Yuan Fang	35584581	Phytomedicine	WB
Norihiko Sasaki	32164764	Cell Commun Signal	WB
Ziyu Liu	35732230	Toxicol Appl Pharmacol	WB

## Storage

Storage:

Store at -20°C. Stable for one year after shipment.

Storage Buffer:

PBS with 0.02% sodium azide and 50% glycerol pH 7.3.

Aliquoting is unnecessary for -20°C storage

\*\*\* 20ul sizes contain 0.1% BSA

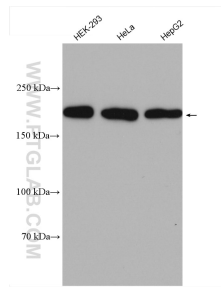
For technical support and original validation data for this product please contact:

T: 1 (888) 4PTGLAB (1-888-478-4522) (toll free in USA), or 1(312) 455-8498 (outside USA)

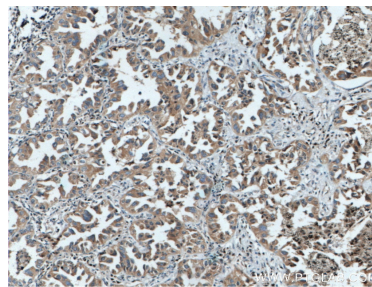
E: [proteintech@ptglab.com](mailto:proteintech@ptglab.com)  
W: [ptglab.com](http://ptglab.com)

This product is exclusively available under Proteintech Group brand and is not available to purchase from any other manufacturer.

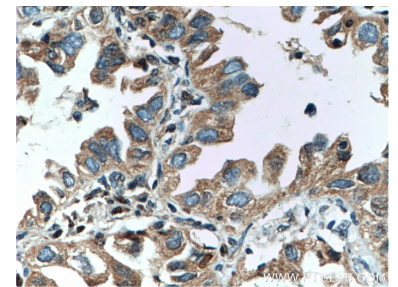
## Selected Validation Data



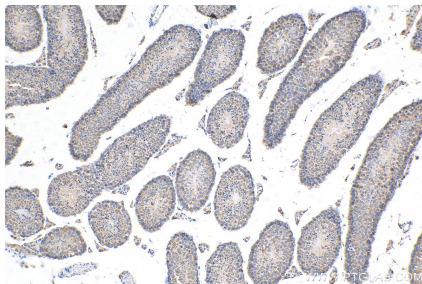
Various lysates were subjected to SDS PAGE followed by western blot with 27248-1-AP (RICTOR antibody) at dilution of 1:4000 incubated at room temperature for 1.5 hours.



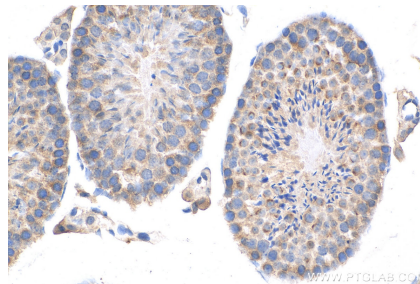
Immunohistochemical analysis of paraffin-embedded human lung cancer tissue slide using 27248-1-AP (RICTOR antibody) at dilution of 1:200 (under 10x lens). Heat mediated antigen retrieval with Tris-EDTA buffer (pH 9.0).



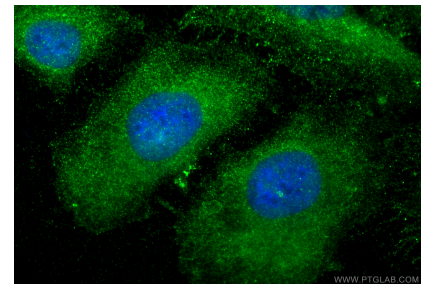
Immunohistochemical analysis of paraffin-embedded human lung cancer tissue slide using 27248-1-AP (RICTOR antibody) at dilution of 1:200 (under 40x lens). Heat mediated antigen retrieval with Tris-EDTA buffer (pH 9.0).



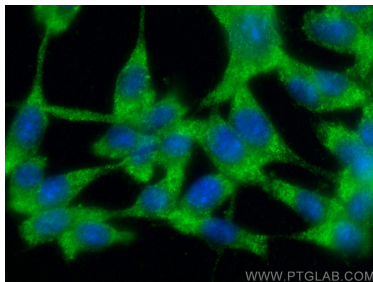
Immunohistochemical analysis of paraffin-embedded mouse testis tissue slide using 27248-1-AP (RICTOR antibody) at dilution of 1:600 (under 10x lens). Heat mediated antigen retrieval with Tris-EDTA buffer (pH 9.0).



Immunohistochemical analysis of paraffin-embedded mouse testis tissue slide using 27248-1-AP (RICTOR antibody) at dilution of 1:600 (under 40x lens). Heat mediated antigen retrieval with Tris-EDTA buffer (pH 9.0).



Immunofluorescent analysis of (-20°C Ethanol) fixed HeLa cells using RICTOR antibody (27248-1-AP) at dilution of 1:400 and Multi-rAb CoraLite® Plus 488-Goat Anti-Rabbit Recombinant Secondary Antibody (H+L) (RGAR002).



Immunofluorescent analysis of (-20°C Ethanol) fixed NIH/3T3 cells using RICTOR antibody (27248-1-AP) at dilution of 1:200 and Multi-rAb CoraLite® Plus 488-Goat Anti-Rabbit Recombinant Secondary Antibody (H+L) (RGAR002).