

For Research Use Only

RBL2 Polyclonal antibody

Catalog Number: 27251-1-AP

Featured Product

5 Publications



Basic Information

Catalog Number:

27251-1-AP

Size:

150ul, Concentration: 800 ug/ml by Nanodrop and 400 ug/ml by Bradford method using BSA as the standard;

Source:

Rabbit

Isotype:

IgG

Immunogen Catalog Number:

AG25087

GenBank Accession Number:

BC034490

GeneID (NCBI):

5934

UNIPROT ID:

Q08999

Full Name:

retinoblastoma-like 2 (p130)

Calculated MW:

130 kDa

Observed MW:

128 kDa

Purification Method:

Antigen affinity purification

Recommended Dilutions:

WB 1:500-1:1000

Applications

Tested Applications:

WB, ELISA

Cited Applications:

WB

Species Specificity:

human

Cited Species:

human, mouse

Positive Controls:

WB: A549 cells, Raji cells

Background Information

RBL2, also named as Retinoblastoma-like protein 2 or p130, is a 1130 amino acid protein, which belongs to the retinoblastoma protein (RB) family. RBL2 is a Key regulator of entry into cell division and is directly involved in heterochromatin formation by maintaining overall chromatin structure and, in particular, that of constitutive heterochromatin by stabilizing histone methylation. RBL2 recruits and targets histone methyltransferases KMT5B and KMT5C, leading to epigenetic transcriptional repression and controls histone H4 'Lys-20' trimethylation. RBL2 probably acts as a transcription repressor by recruiting chromatin-modifying enzymes to promoters. RBL2 may act as a tumor suppressor.

Notable Publications

Author	Pubmed ID	Journal	Application
Xiaoman Chen	30207732	Mol Pharm	WB
Ji Young Kim	32229099	Biochem Pharmacol	WB
Ji Che	33887345	Life Sci	WB

Storage

Storage:

Store at -20°C. Stable for one year after shipment.

Storage Buffer:

PBS with 0.02% sodium azide and 50% glycerol pH 7.3.

Aliquoting is unnecessary for -20°C storage

*** 20ul sizes contain 0.1% BSA

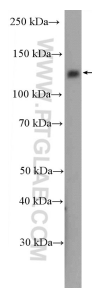
For technical support and original validation data for this product please contact:

T: 1 (888) 4PTGLAB (1-888-478-4522) (toll free in USA), or 1(312) 455-8498 (outside USA)

E: proteintech@ptglab.com
W: ptglab.com

This product is exclusively available under Proteintech Group brand and is not available to purchase from any other manufacturer.

Selected Validation Data



A549 cells were subjected to SDS PAGE followed by western blot with 27251-1-AP (RBL2 Antibody) at dilution of 1:600 incubated at room temperature for 1.5 hours.