

For Research Use Only

# EPDR1 Polyclonal antibody, PBS Only

Catalog Number: 27252-1-PBS



## Basic Information

<b>Catalog Number:</b> 27252-1-PBS	<b>GenBank Accession Number:</b> BC018299	<b>Purification Method:</b> Antigen affinity purification
<b>Size:</b> 100ug , Concentration: 1 mg/ml by Nanodrop;	<b>GeneID (NCBI):</b> 54749	
<b>Source:</b> Rabbit	<b>UNIPROT ID:</b> Q9UM22	
<b>Isotype:</b> IgG	<b>Full Name:</b> Mammalian ependymin-related protein 1	
<b>Immunogen Catalog Number:</b> AG26120	<b>Calculated MW:</b> 25 kDa	
	<b>Observed MW:</b> 25-30 kDa	

## Applications

**Tested Applications:**  
WB, IHC, Indirect ELISA

**Species Specificity:**  
human, mouse, rat

## Background Information

The ependymin-related 1 (EPDR1) gene, also known as MERP1 and UCC1, encodes for a protein related to ependymins, which are type II transmembrane proteins that are similar to two families of cell adhesion molecules: the protocadherins and ependymins. Ependymin-related protein 1 (EPDR1) was recently identified as a secreted human batokine regulating mitochondrial respiration linked to thermogenesis in brown fat. Proteomics studies of mammalian mannose-6-phosphate (M6P) glycoproteins have identified EPDR1 as a lysosomal protein with unknown function. The lysosomal localization of EPDR1 was further demonstrated in mouse brain homogenates by subcellular fractionation.(PMID: 36343918, PMID: 33902536, PMID: 30729188)

## Storage

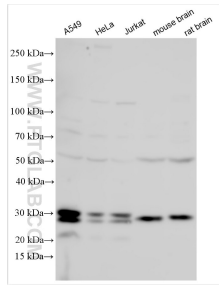
**Storage:**  
Store at -80°C.

**Storage Buffer:**  
PBS only, pH7.3

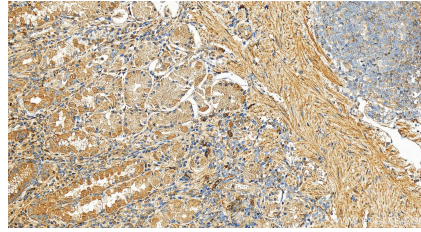
For technical support and original validation data for this product please contact:  
T: 1 (888) 4PTGLAB (1-888-478-4522) (toll free in USA), or 1(312) 455-8498 (outside USA)      E: proteintech@ptglab.com  
W: ptglab.com

**This product is exclusively available under Proteintech Group brand and is not available to purchase from any other manufacturer.**

## Selected Validation Data



Various lysates were subjected to SDS PAGE followed by western blot with 27252-1-AP (EPDR1 antibody) at dilution of 1:8000 incubated at room temperature for 1.5 hours. This data was developed using the same antibody clone with 27252-1-PBS in a different storage buffer formulation.



Immunohistochemical analysis of paraffin-embedded human stomach tissue slide using 27252-1-AP (EPDR1 antibody) at dilution of 1:2000 (under 20x lens). Heat mediated antigen retrieval with Tris-EDTA buffer (pH 9.0). This data was developed using the same antibody clone with 27252-1-PBS in a different storage buffer formulation.