

For Research Use Only

KIF20B Polyclonal antibody

Catalog Number: 27269-1-AP



Basic Information

Catalog Number: 27269-1-AP	GenBank Accession Number: NM_001284259	Purification Method: Antigen affinity purification
Size: 150ul , Concentration: 900 ug/ml by Nanodrop;	GeneID (NCBI): 9585	Recommended Dilutions: WB 1:1000-1:4000 IHC 1:50-1:500
Source: Rabbit	Full Name: kinesin family member 20B	
Isotype: IgG	Calculated MW: 211 kDa	
Immunogen Catalog Number: AG26191	Observed MW: 214 kDa	

Applications

Tested Applications: WB, IHC, ELISA	Positive Controls:
Species Specificity: human, Mouse	WB : HT-29 cells, mouse brain tissue, HepG2 cells, Jurkat cells
Note-IHC: suggested antigen retrieval with TE buffer pH 9.0; (*) Alternatively, antigen retrieval may be performed with citrate buffer pH 6.0	IHC : human colon cancer tissue,

Storage

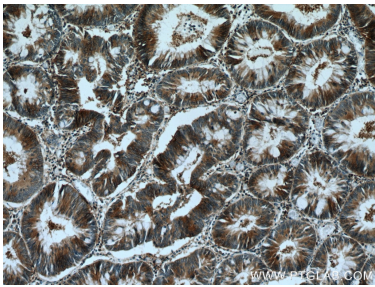
Storage: Store at -20°C. Stable for one year after shipment.
Storage Buffer: PBS with 0.02% sodium azide and 50% glycerol pH 7.3.
Aliquoting is unnecessary for -20° C storage

*** 20ul sizes contain 0.1% BSA

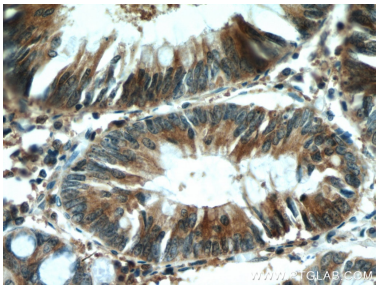
For technical support and original validation data for this product please contact:
T: 1 (888) 4PTGLAB (1-888-478-4522) (toll free in USA), or 1(312) 455-8498 (outside USA)
E: proteintech@ptglab.com
W: ptglab.com

This product is exclusively available under Proteintech Group brand and is not available to purchase from any other manufacturer.

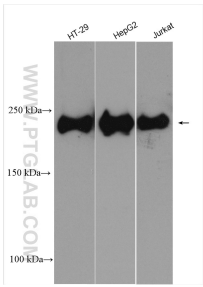
Selected Validation Data



Immunohistochemical analysis of paraffin-embedded human colon cancer tissue slide using 27269-1-AP (KIF20B antibody) at dilution of 1:200 (under 10x lens). Heat mediated antigen retrieval with Tris-EDTA buffer (pH 9.0).



Immunohistochemical analysis of paraffin-embedded human colon cancer tissue slide using 27269-1-AP (KIF20B antibody) at dilution of 1:200 (under 40x lens). Heat mediated antigen retrieval with Tris-EDTA buffer (pH 9.0).



Various lysates were subjected to SDS PAGE followed by western blot with 27269-1-AP (KIF20B antibody) at dilution of 1:2000 incubated at room temperature for 1.5 hours.