

For Research Use Only

KIF21A Polyclonal antibody

Catalog Number: 27276-1-AP



Basic Information

Catalog Number: 27276-1-AP	GenBank Accession Number: NM_001173463	Purification Method: Antigen affinity purification
Size: 150ul , Concentration: 1500 µg/ml by Nanodrop and 767 µg/ml by Bradford method using BSA as the standard;	GeneID (NCBI): 55605	Recommended Dilutions: WB 1:500-1:3000 IP 0.5-4.0 ug for IP and 1:500-1:1000 for WB
Source: Rabbit	Full Name: kinesin family member 21A	
Isotype: IgG	Calculated MW: 187 kDa	
Immunogen Catalog Number: AG26192	Observed MW: 190-200 kDa	

Applications

Tested Applications: IP, WB, ELISA	Positive Controls: WB : HEK-293T cells, mouse brain tissue, MCF-7 IP : mouse brain tissue,
Species Specificity: human, mouse	

Background Information

Storage

Storage:
Store at -20°C. Stable for one year after shipment.
Storage Buffer:
PBS with 0.02% sodium azide and 50% glycerol pH 7.3.
Aliquoting is unnecessary for -20°C storage

*** 20ul sizes contain 0.1% BSA

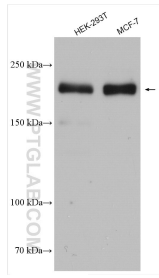
For technical support and original validation data for this product please contact:

T: 1 (888) 4PTGLAB (1-888-478-4522) (toll free in USA), or 1(312) 455-8498 (outside USA)

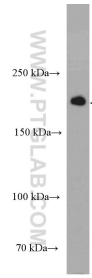
E: proteintech@ptglab.com
W: ptglab.com

This product is exclusively available under Proteintech Group brand and is not available to purchase from any other manufacturer.

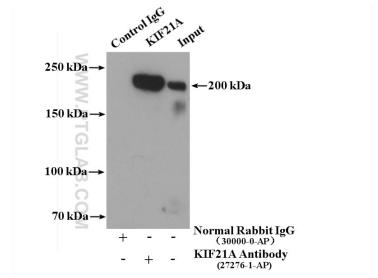
Selected Validation Data



Various lysates were subjected to SDS PAGE followed by western blot with 27276-1-AP (KIF21A antibody) at dilution of 1:1500 incubated at room temperature for 1.5 hours.



mouse brain tissue were subjected to SDS PAGE followed by western blot with 27276-1-AP (KIF21A Antibody) at dilution of 1:600 incubated at room temperature for 1.5 hours.



IP Result of anti-KIF21A (IP:27276-1-AP, 4ug; Detection:27276-1-AP 1:500) with mouse brain tissue lysate 5600ug.