

For Research Use Only

KLHDC1 Polyclonal antibody

Catalog Number: 27277-1-AP



Basic Information

Catalog Number:

27277-1-AP

Size:

150ul , Concentration: 700 ug/ml by Nanodrop and 400 ug/ml by Bradford method using BSA as the standard;

Source:

Rabbit

Isotype:

IgG

Immunogen Catalog Number:

AG23704

GenBank Accession Number:

BC101597

GeneID (NCBI):

122773

UNIPROT ID:

Q8N7A1

Full Name:

kelch domain containing 1

Observed MW:

47 kDa

Purification Method:

Antigen affinity purification

Recommended Dilutions:

WB 1:500-1:2000

Applications

Tested Applications:

WB, ELISA

Species Specificity:

human, mouse, rat

Positive Controls:

WB : HeLa cells, mouse liver tissue, rat liver tissue

Storage

Storage:

Store at -20°C. Stable for one year after shipment.

Storage Buffer:

PBS with 0.02% sodium azide and 50% glycerol pH 7.3.

Aliquoting is unnecessary for -20°C storage

*** 20ul sizes contain 0.1% BSA

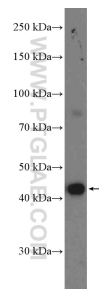
For technical support and original validation data for this product please contact:

T: 1 (888) 4PTGLAB (1-888-478-4522) (toll free in USA), or 1(312) 455-8498 (outside USA)

E: proteintech@ptglab.com
W: ptglab.com

This product is exclusively available under Proteintech Group brand and is not available to purchase from any other manufacturer.

Selected Validation Data



HeLa cells were subjected to SDS PAGE followed by western blot with 27277-1-AP (KLHDC1 Antibody) at dilution of 1:1000 incubated at room temperature for 1.5 hours.