

For Research Use Only

KCTD10 Polyclonal antibody

Catalog Number: 27279-1-AP

Featured Product

4 Publications



Basic Information

Catalog Number:

27279-1-AP

Size:

150ul, Concentration: 750 ug/ml by Nanodrop and 367 ug/ml by Bradford method using BSA as the standard;

Source:

Rabbit

Isotype:

IgG

Immunogen Catalog Number:

AG25971

GenBank Accession Number:

BC040062

GeneID (NCBI):

83892

UNIPROT ID:

Q9H3F6

Full Name:

potassium channel tetramerisation domain containing 10

Calculated MW:

313 aa, 35 kDa

Observed MW:

35 kDa

Purification Method:

Antigen affinity purification

Recommended Dilutions:

WB 1:500-1:2000

IHC 1:50-1:500

Applications

Tested Applications:

WB, IHC, ELISA

Cited Applications:

WB

Species Specificity:

human

Cited Species:

human, mouse, rat

Note-IHC: suggested antigen retrieval with TE buffer pH 9.0; (*) Alternatively, antigen retrieval may be performed with citrate buffer pH 6.0

Positive Controls:

WB : Jurkat cells, HEK-293 cells, HeLa cells, K-562 cells, MCF-7 cells, U2OS cells

IHC : human intrahepatic cholangiocarcinoma tissue,

Background Information

KCTD10 is a member of the polymerase delta-interacting protein 1 (PDIP1) gene family, which consists of 3 members, PDIP1, KCTD10 and TNFAIP1. KCTD10 is inducible by TNF- α , interacts with PCNA and the small subunit (p50) of DNA polymerase δ . Previous reports have shown that KCTD10 is essential for mammalian development. Further functional studies showed that KCTD10 interacts with proliferating cell nuclear antigen (PCNA) and plays an important role in DNA synthesis.

Notable Publications

Author	Pubmed ID	Journal	Application
Xin Wu	31511519	Nat Commun	WB
Yun Feng	36381427	Genet Res (Camb)	WB
Yue Liu	33553178	Front Cell Dev Biol	WB

Storage

Storage:

Store at -20°C. Stable for one year after shipment.

Storage Buffer:

PBS with 0.02% sodium azide and 50% glycerol pH 7.3.

Aliquoting is unnecessary for -20°C storage

*** 20ul sizes contain 0.1% BSA

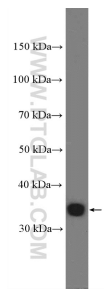
For technical support and original validation data for this product please contact:

T: 1 (888) 4PTGLAB (1-888-478-4522) (toll free in USA), or 1(312) 455-8498 (outside USA)

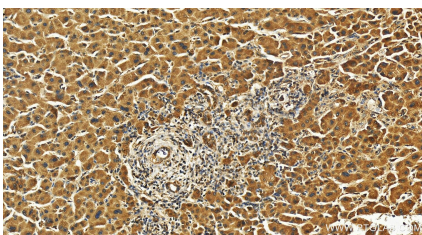
E: proteintech@ptglab.com
W: ptglab.com

This product is exclusively available under Proteintech Group brand and is not available to purchase from any other manufacturer.

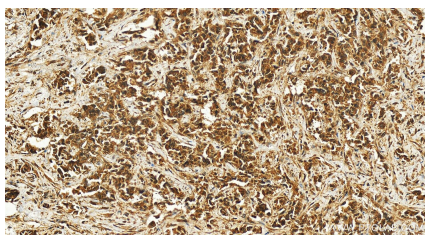
Selected Validation Data



Jurkat cells were subjected to SDS PAGE followed by western blot with 27279-1-AP (KCTD10 Antibody) at dilution of 1:1000 incubated at room temperature for 1.5 hours.



Immunohistochemical analysis of paraffin-embedded human intrahepatic cholangiocarcinoma tissue slide using 27279-1-AP (KCTD10 antibody) at dilution of 1:100 (under 20x lens). Heat mediated antigen retrieval with Tris-EDTA buffer (pH 9.0).



Immunohistochemical analysis of paraffin-embedded human intrahepatic cholangiocarcinoma tissue slide using 27279-1-AP (KCTD10 antibody) at dilution of 1:100 (under 20x lens). Heat mediated antigen retrieval with Tris-EDTA buffer (pH 9.0).