

For Research Use Only

PPP1R3B Polyclonal antibody

Catalog Number: 27285-1-AP



Basic Information

Catalog Number: 27285-1-AP	GenBank Accession Number: BC043388	Purification Method: Antigen affinity purification
Size: 150ul , Concentration: 300 µg/ml by Nanodrop and 267 µg/ml by Bradford method using BSA as the standard;	GeneID (NCBI): 79660	Recommended Dilutions: WB 1:500-1:2000
Source: Rabbit	Full Name: protein phosphatase 1, regulatory (inhibitor) subunit 3B	
Isotype: IgG	Calculated MW: 33 kDa	
Immunogen Catalog Number: AG26025	Observed MW: 33 kDa	

Applications

Tested Applications: WB, ELISA	Positive Controls: WB : mouse heart tissue, MDA-MB-453s cells
Species Specificity: human, mouse	

Background Information

Storage

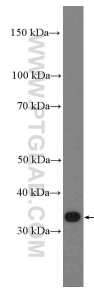
Storage:
Store at -20°C. Stable for one year after shipment.
Storage Buffer:
PBS with 0.02% sodium azide and 50% glycerol pH 7.3.
Aliquoting is unnecessary for -20°C storage

*** 20ul sizes contain 0.1% BSA

For technical support and original validation data for this product please contact:
T: 1 (888) 4PTGLAB (1-888-478-4522) (toll free in USA), or 1(312) 455-8498 (outside USA) E: proteintech@ptglab.com
W: ptglab.com

This product is exclusively available under Proteintech Group brand and is not available to purchase from any other manufacturer.

Selected Validation Data



mouse heart tissue were subjected to SDS PAGE followed by western blot with 27285-1-AP (PPP1R3B Antibody) at dilution of 1:1000 incubated at room temperature for 1.5 hours.