

For Research Use Only

BCRP/ABCG2 Polyclonal antibody

Catalog Number: 27286-1-AP

Featured Product

60 Publications



Basic Information

Catalog Number:

27286-1-AP

Size:

150ul, Concentration: 600 ug/ml by Nanodrop;

Source:

Rabbit

Isotype:

IgG

Immunogen Catalog Number:

AG25911

GenBank Accession Number:

BC021281

GeneID (NCBI):

9429

UNIPROT ID:

Q9UNQ0

Full Name:

ATP-binding cassette, sub-family G (WHITE), member 2

Calculated MW:

70 kDa

Observed MW:

68-72 kDa

Purification Method:

Antigen affinity purification

Recommended Dilutions:

WB: 1:500-1:2000

IHC: 1:50-1:500

Applications

Tested Applications:

WB, IHC, ELISA

Cited Applications:

WB, IHC, IF

Species Specificity:

human, mouse

Cited Species:

human, mouse, rat, canine

Note-IHC: suggested antigen retrieval with TE buffer pH 9.0; (*) Alternatively, antigen retrieval may be performed with citrate buffer pH 6.0

Positive Controls:

WB : HepG2 cells, HEK-293 cells, MCF-7 cells, SGC-7901 cells, mouse brain tissue

IHC : human liver cancer tissue, human breast cancer tissue

Background Information

BCRP (breast cancer resistance protein) confers a broad spectrum of drug resistance and the expression of BCRP is enhanced in several cancer cell models. It has ATPase activity and belongs to a family of multiple drug resistant proteins. Data also indicated that BCRP might be an early marker for some stem cells.

Notable Publications

Author	Pubmed ID	Journal	Application
Chaoqun Liu	34551797	J Exp Clin Cancer Res	WB
Xingkang Jiang	31672604	Cell Signal	WB
Guoshu Lin	34699754	Eur J Pharmacol	WB

Storage

Storage:

Store at -20°C. Stable for one year after shipment.

Storage Buffer:

PBS with 0.02% sodium azide and 50% glycerol, pH7.3

Aliquoting is unnecessary for -20°C storage

*** 20ul sizes contain 0.1% BSA

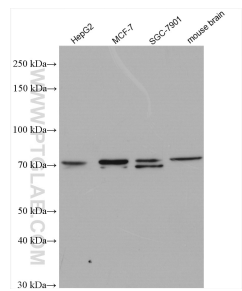
For technical support and original validation data for this product please contact:

T: 1 (888) 4PTGLAB (1-888-478-4522) (toll free in USA), or 1(312) 455-8498 (outside USA)

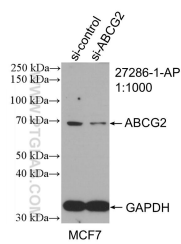
E: proteintech@ptglab.com
W: ptglab.com

This product is exclusively available under Proteintech Group brand and is not available to purchase from any other manufacturer.

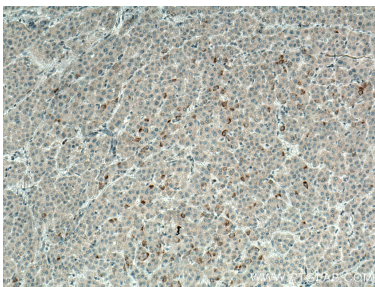
Selected Validation Data



Various lysates were subjected to SDS PAGE followed by western blot with 27286-1-AP (BCRP,ABCG2 antibody) at dilution of 1:1000 incubated at room temperature for 1.5 hours.



WB result of BCRP,ABCG2 antibody (27286-1-AP; 1:1000; incubated at room temperature for 1.5 hours) with sh-Control and sh-BCRP,ABCG2 transfected MCF-7 cells.



Immunohistochemical analysis of paraffin-embedded human liver cancer tissue slide using 27286-1-AP (BCRP,ABCG2 antibody) at dilution of 1:200 (under 10x lens. Heat mediated antigen retrieval with Tris-EDTA buffer (pH 9.0).