

For Research Use Only

Chordin Polyclonal antibody

Catalog Number: 27293-1-AP

1 Publications



Basic Information

Catalog Number:

27293-1-AP

Size:

150ul, Concentration: 450 ug/ml by Nanodrop and 333 ug/ml by Bradford method using BSA as the standard;

Source:

Rabbit

Isotype:

IgG

Immunogen Catalog Number:

AG26001

GenBank Accession Number:

BC112345

GeneID (NCBI):

8646

UNIPROT ID:

Q9H2X0

Full Name:

chordin

Calculated MW:

955 aa, 102 kDa

Observed MW:

102 kDa

Purification Method:

Antigen affinity purification

Recommended Dilutions:

WB 1:200-1:1000

IHC 1:50-1:500

Applications

Tested Applications:

WB, IHC, ELISA

Cited Applications:

IHC

Species Specificity:

human, mouse, rat

Cited Species:

human

Note-IHC: suggested antigen retrieval with TE buffer pH 9.0; (*) Alternatively, antigen retrieval may be performed with citrate buffer pH 6.0

Positive Controls:

WB : 3T3-L1 cells,

IHC : human liver cancer tissue, rat brain tissue

Background Information

CHRD is a secreted protein that dorsalizes early vertebrate embryonic tissues by binding to ventralizing TGF-beta-like bone morphogenetic proteins and sequestering them in latent complexes. CHRD may also have roles in organogenesis and during adulthood. It has been suggested that CHRD could be a candidate gene for Cornelia de Lange syndrome. Reduced expression of CHRD results in enhanced bone regeneration.

Notable Publications

| Author | Pubmed ID | Journal | Application |
|---------|-----------|----------|-------------|
| Jing Ma | 38698265 | Oncogene | IHC |

Storage

Storage:

Store at -20°C. Stable for one year after shipment.

Storage Buffer:

PBS with 0.02% sodium azide and 50% glycerol pH 7.3.

Aliquoting is unnecessary for -20°C storage

*** 20ul sizes contain 0.1% BSA

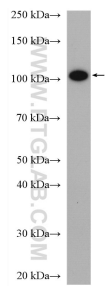
For technical support and original validation data for this product please contact:

T: 1 (888) 4PTGLAB (1-888-478-4522) (toll free in USA), or 1(312) 455-8498 (outside USA)

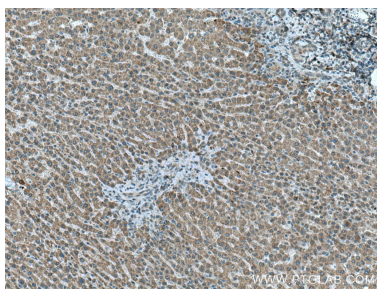
E: proteintech@ptglab.com
W: ptglab.com

This product is exclusively available under Proteintech Group brand and is not available to purchase from any other manufacturer.

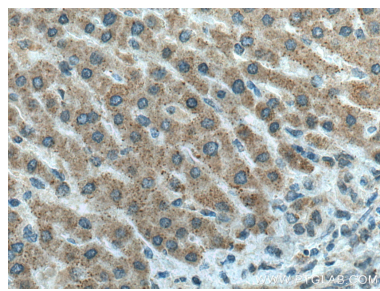
Selected Validation Data



3T3-L1 cells were subjected to SDS PAGE followed by western blot with 27293-1-AP (CHRD antibody) at dilution of 1:300 incubated at room temperature for 1.5 hours.



Immunohistochemical analysis of paraffin-embedded human liver cancer tissue slide using 27293-1-AP (Chordin antibody) at dilution of 1:200 (under 10x lens). Heat mediated antigen retrieval with Tris-EDTA buffer (pH 9.0).



Immunohistochemical analysis of paraffin-embedded human liver cancer tissue slide using 27293-1-AP (Chordin antibody) at dilution of 1:200 (under 40x lens). Heat mediated antigen retrieval with Tris-EDTA buffer (pH 9.0).