

For Research Use Only

GBP2 Polyclonal antibody

Catalog Number: 27299-1-AP

Featured Product

6 Publications



Basic Information

Catalog Number:

27299-1-AP

Size:

150ul, Concentration: 600 ug/ml by Nanodrop and 367 ug/ml by Bradford method using BSA as the standard;

Source:

Rabbit

Isotype:

IgG

Immunogen Catalog Number:

AG25433

GenBank Accession Number:

BC022272

GeneID (NCBI):

2634

UNIPROT ID:

P32456

Full Name:

guanylate binding protein 2, interferon-inducible

Calculated MW:

591 aa, 67 kDa

Observed MW:

67 kDa

Purification Method:

Antigen affinity purification

Recommended Dilutions:

WB 1:500-1:2000

IHC 1:50-1:500

Applications

Tested Applications:

WB, IHC, ELISA

Cited Applications:

WB, IHC

Species Specificity:

human, mouse, rat

Cited Species:

human, mouse

Note-IHC: suggested antigen retrieval with TE buffer pH 9.0; (*) Alternatively, antigen retrieval may be performed with citrate buffer pH 6.0

Positive Controls:

WB : A375 cells, HeLa cells, mouse spleen tissue, rat spleen tissue

IHC : human spleen tissue,

Notable Publications

Author	Pubmed ID	Journal	Application
Rajendra Karki	32205422	J Immunol	WB
Qingyuan Liu	35489720	Anticancer Res	WB,IHC
Jiaqiang Xiong	39985265	Adv Sci (Weinh)	WB,IHC

Storage

Storage:

Store at -20°C. Stable for one year after shipment.

Storage Buffer:

PBS with 0.02% sodium azide and 50% glycerol, pH7.3

Aliquoting is unnecessary for -20°C storage

*** 20ul sizes contain 0.1% BSA

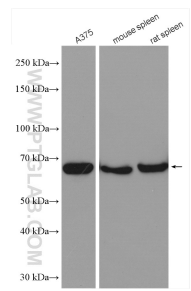
For technical support and original validation data for this product please contact:

T: 1 (888) 4PTGLAB (1-888-478-4522) (toll free in USA), or 1(312) 455-8498 (outside USA)

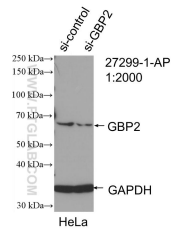
E: proteintech@ptglab.com
W: ptglab.com

This product is exclusively available under Proteintech Group brand and is not available to purchase from any other manufacturer.

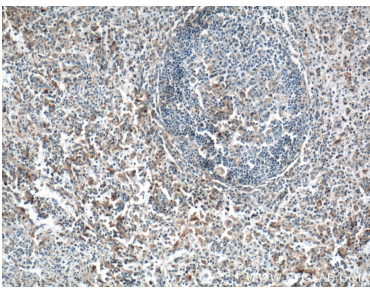
Selected Validation Data



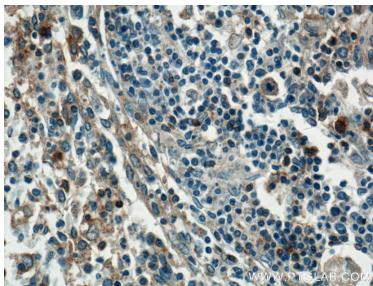
Various lysates were subjected to SDS PAGE followed by western blot with 27299-1-AP (GBP2 antibody) at dilution of 1:1000 incubated at room temperature for 1.5 hours.



WB result of GBP2 antibody (27299-1-AP; 1:2000; incubated at room temperature for 1.5 hours) with sh-Control and sh-GBP2 transfected HeLa cells.



Immunohistochemical analysis of paraffin-embedded human spleen tissue slide using 27299-1-AP (GBP2 Antibody) at dilution of 1:200 (under 10x lens).



Immunohistochemical analysis of paraffin-embedded human spleen tissue slide using 27299-1-AP (GBP2 Antibody) at dilution of 1:200 (under 40x lens).