

For Research Use Only

SLC22A13 Polyclonal antibody

Catalog Number: 27301-1-AP



Basic Information

Catalog Number: 27301-1-AP	GenBank Accession Number: BC035973	Purification Method: Antigen affinity purification
Size: 150ul , Concentration: 500 µg/ml by Nanodrop;	GeneID (NCBI): 9390	Recommended Dilutions: WB 1:500-1:1000
Source: Rabbit	Full Name: solute carrier family 22 (organic anion transporter), member 13	
Isotype: IgG	Calculated MW: 61 kDa	
Immunogen Catalog Number: AG24072	Observed MW: 50-52, 60 kDa	

Applications

Tested Applications: WB, ELISA	Positive Controls:
Species Specificity: mouse, rat	WB : unboiled mouse brain tissue, unboiled rat brain tissue

Background Information

SLC22A13 (solute carrier family 22 member 13), also known as OCTL1. It is expected to be located in cell membrane and mainly expressed in kidney. The calculated molecular weight of SLC22A13 is 60 kDa. This antibody can recognize the 52 kDa isoform of target. This gene encodes a member of the organic-cation transporter family. It is located in a gene cluster with another member of the family, organic cation transporter like 4. The encoded protein is a transmembrane protein involved in the transport of small molecules. This protein can function to mediate urate uptake and is a high affinity nicotinate exchanger in the kidneys and the intestine.

Storage

Storage:
Store at -20°C. Stable for one year after shipment.
Storage Buffer:
PBS with 0.02% sodium azide and 50% glycerol pH 7.3.
Aliquoting is unnecessary for -20°C storage

*** 20ul sizes contain 0.1% BSA

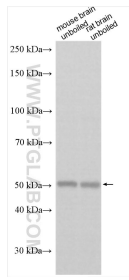
For technical support and original validation data for this product please contact:

T: 1 (888) 4PTGLAB (1-888-478-4522) (toll free in USA), or 1(312) 455-8498 (outside USA)

E: proteintech@ptglab.com
W: ptglab.com

This product is exclusively available under Proteintech Group brand and is not available to purchase from any other manufacturer.

Selected Validation Data



Various lysates were subjected to SDS PAGE followed by western blot with 27301-1-AP (SLC22A13 antibody) at dilution of 1:500 incubated at room temperature for 1.5 hours.