

For Research Use Only

STAMBPL1 Polyclonal antibody

Catalog Number: 27315-1-AP

4 Publications



Basic Information

Catalog Number:

27315-1-AP

Size:

150ul, Concentration: 500 ug/ml by Nanodrop and 333 ug/ml by Bradford method using BSA as the standard;

Source:

Rabbit

Isotype:

IgG

Immunogen Catalog Number:

AG26308

GenBank Accession Number:

BC010846

GeneID (NCBI):

57559

UNIPROT ID:

Q96FJ0

Full Name:

STAM binding protein-like 1

Observed MW:

50 kDa

Purification Method:

Antigen affinity purification

Recommended Dilutions:

WB 1:1000-1:8000

IHC 1:50-1:500

Applications

Tested Applications:

WB, IHC, ELISA

Cited Applications:

WB, IHC, IF, ColP

Species Specificity:

human

Cited Species:

human, mouse

Note-IHC: suggested antigen retrieval with TE buffer pH 9.0; (*) Alternatively, antigen retrieval may be performed with citrate buffer pH 6.0

Positive Controls:

WB : A549 cells, HeLa cells, MCF-7 cells, human testis tissue, Jurkat cells

IHC : human liver tissue, human colon tissue

Notable Publications

Author	Pubmed ID	Journal	Application
Hongli Zhang	39388352	Cell Rep	WB,IF,ColP
Piao Zheng	39348778	Phytomedicine	WB
Junyi Jin	39150093	Mol Carcinog	WB,IHC

Storage

Storage:

Store at -20°C. Stable for one year after shipment.

Storage Buffer:

PBS with 0.02% sodium azide and 50% glycerol pH 7.3.

Aliquoting is unnecessary for -20°C storage

*** 20ul sizes contain 0.1% BSA

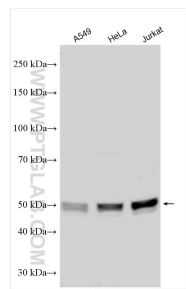
For technical support and original validation data for this product please contact:

T: 1 (888) 4PTGLAB (1-888-478-4522) (toll free in USA), or 1(312) 455-8498 (outside USA)

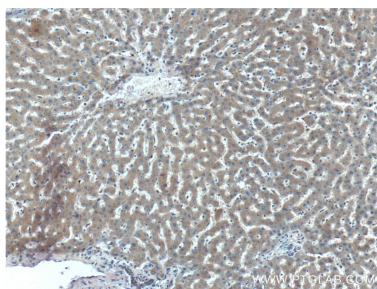
E: proteintech@ptglab.com
W: ptglab.com

This product is exclusively available under Proteintech Group brand and is not available to purchase from any other manufacturer.

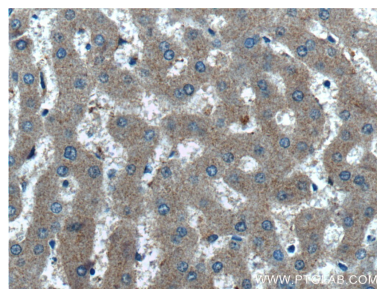
Selected Validation Data



Various lysates were subjected to SDS PAGE followed by western blot with 27315-1-AP (STAMBPL1 antibody) at dilution of 1:4000 incubated at room temperature for 1.5 hours.



Immunohistochemical analysis of paraffin-embedded human liver tissue slide using 27315-1-AP (STAMBPL1 antibody) at dilution of 1:200 (under 10x lens).



Immunohistochemical analysis of paraffin-embedded human liver tissue slide using 27315-1-AP (STAMBPL1 antibody) at dilution of 1:200 (under 40x lens).