

# Inhibin alpha Polyclonal antibody

Catalog Number: 27331-1-AP

## Basic Information

**Catalog Number:**

27331-1-AP

**Size:**

150ul, Concentration: 230 ug/ml by Nanodrop;

**Source:**

Rabbit

**Isotype:**

IgG

**Immunogen Catalog Number:**

AG25999

**GenBank Accession Number:**

BC006391

**GeneID (NCBI):**

3623

**UNIPROT ID:**

P05111

**Full Name:**

inhibin, alpha

**Calculated MW:**

40 kDa

**Observed MW:**

40 kDa

**Purification Method:**

Antigen affinity purification

**Recommended Dilutions:**

WB 1:2000-1:12000

IHC 1:50-1:500

## Applications

**Tested Applications:**

WB, IHC, ELISA

**Species Specificity:**

human, mouse, rat

**Note-IHC: suggested antigen retrieval with TE buffer pH 9.0; (\*) Alternatively, antigen retrieval may be performed with citrate buffer pH 6.0**

**Positive Controls:**

WB : mouse ovary tissue, mouse testis tissue, rat ovary tissue

IHC : mouse ovary tissue,

## Background Information

Inhibin, a heterodimeric member of the TGF family, consists of an alpha ( $\alpha$ ) subunit (coded by INHA) and a beta ( $\beta$ ) subunit, which combine to produce either inhibin A ( $\alpha\beta$ A) or inhibin B ( $\alpha\beta$ B). Inhibin complexes negatively regulate follicle stimulating hormone secretion from the pituitary gland. Inhibins have also been implicated in regulating numerous cellular processes including cell proliferation, apoptosis, immune response and hormone secretion.

## Storage

**Storage:**

Store at -20°C. Stable for one year after shipment.

**Storage Buffer:**

PBS with 0.02% sodium azide and 50% glycerol pH 7.3.

Aliquoting is unnecessary for -20°C storage

\*\*\* 20ul sizes contain 0.1% BSA

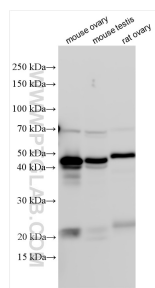
For technical support and original validation data for this product please contact:

T: 1 (888) 4PTGLAB (1-888-478-4522) (toll free in USA), or 1(312) 455-8498 (outside USA)

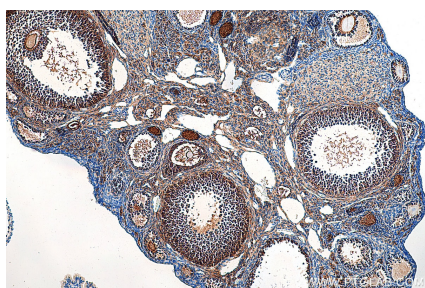
E: [proteintech@ptglab.com](mailto:proteintech@ptglab.com)  
W: [ptglab.com](http://ptglab.com)

This product is exclusively available under Proteintech Group brand and is not available to purchase from any other manufacturer.

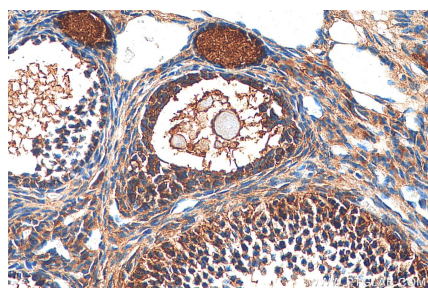
## Selected Validation Data



Various lysates were subjected to SDS PAGE followed by western blot with 27331-1-AP (Inhibin alpha antibody) at dilution of 1:6000 incubated at room temperature for 1.5 hours.



Immunohistochemical analysis of paraffin-embedded mouse ovary tissue slide using 27331-1-AP (Inhibin alpha antibody) at dilution of 1:200 (under 10x lens). Heat mediated antigen retrieval with Tris-EDTA buffer (pH 9.0).



Immunohistochemical analysis of paraffin-embedded mouse ovary tissue slide using 27331-1-AP (Inhibin alpha antibody) at dilution of 1:200 (under 40x lens). Heat mediated antigen retrieval with Tris-EDTA buffer (pH 9.0).