

For Research Use Only

MRPL35 Polyclonal antibody

Catalog Number: 27339-1-AP



Basic Information

Catalog Number:

27339-1-AP

Size:

150ul , Concentration: 450 ug/ml by Nanodrop;

Source:

Rabbit

Isotype:

IgG

Immunogen Catalog Number:

AG26300

GenBank Accession Number:

BC020651

GeneID (NCBI):

51318

UNIPROT ID:

Q9NZE8

Full Name:

mitochondrial ribosomal protein L35

Calculated MW:

170 aa, 19 kDa

Observed MW:

24 kDa

Purification Method:

Antigen affinity purification

Recommended Dilutions:

WB 1:2000-1:12000

IF/ICC 1:200-1:800

Applications

Tested Applications:

WB, IF/ICC, ELISA

Species Specificity:

human, mouse

Positive Controls:

WB : mouse heart tissue, mouse liver tissue

IF/ICC : HepG2 cells,

Background Information

Mitochondrial ribosomal protein L35 (MRPL35) is a member of the large subunit family of mitochondrial ribosomal proteins. It plays a key role in the assembly of cytochrome C oxidase, involved in the translation of mitochondrial proteins.

Storage

Storage:

Store at -20°C. Stable for one year after shipment.

Storage Buffer:

PBS with 0.02% sodium azide and 50% glycerol pH 7.3.

Aliquoting is unnecessary for -20°C storage

*** 20ul sizes contain 0.1% BSA

For technical support and original validation data for this product please contact:

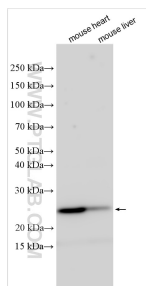
T: 1 (888) 4PTGLAB (1-888-478-4522) (toll free in USA), or 1(312) 455-8498 (outside USA)

E: proteintech@ptglab.com

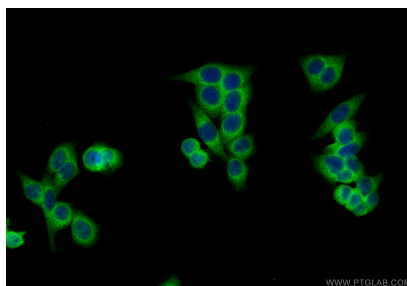
W: ptglab.com

This product is exclusively available under Proteintech Group brand and is not available to purchase from any other manufacturer.

Selected Validation Data



Various lysates were subjected to SDS PAGE followed by western blot with 27339-1-AP (MRPL35 antibody) at dilution of 1:6000 incubated at room temperature for 1.5 hours.



Immunofluorescent analysis of (4% PFA) fixed HepG2 cells using MRPL35 antibody (27339-1-AP) at dilution of 1:400 and Multi-Ab CoraLite® Plus 488-Goat Anti-Rabbit Recombinant Secondary Antibody (H+L) (RGAR002).