

For Research Use Only

MRPL35 Polyclonal antibody, PBS Only

Catalog Number: 27339-1-PBS



Basic Information

Catalog Number:

27339-1-PBS

Size:

100ug, Concentration: 1 mg/ml by Nanodrop;

Source:

Rabbit

Isotype:

IgG

Immunogen Catalog Number:

AG26300

GenBank Accession Number:

BC020651

GeneID (NCBI):

51318

UNIPROT ID:

Q9NZE8

Full Name:

mitochondrial ribosomal protein L35

Calculated MW:

170 aa, 19 kDa

Observed MW:

24 kDa

Purification Method:

Antigen affinity purification

Applications

Tested Applications:

WB, IF/ICC, Indirect ELISA

Species Specificity:

human, mouse

Background Information

Mitochondrial ribosomal protein L35 (MRPL35) is a member of the large subunit family of mitochondrial ribosomal proteins. It plays a key role in the assembly of cytochrome C oxidase, involved in the translation of mitochondrial proteins.

Storage

Storage:

Store at -80°C.

Storage Buffer:

PBS only, pH7.3

For technical support and original validation data for this product please contact:

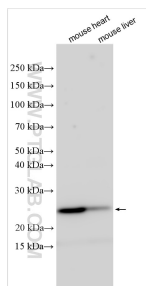
T: 1 (888) 4PTGLAB (1-888-478-4522) (toll free in USA), or 1(312) 455-8498 (outside USA)

E: proteintech@ptglab.com

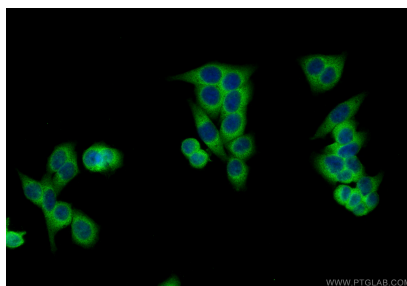
W: ptglab.com

This product is exclusively available under Proteintech Group brand and is not available to purchase from any other manufacturer.

Selected Validation Data



Various lysates were subjected to SDS PAGE followed by western blot with 27339-1-AP (MRPL35 antibody) at dilution of 1:6000 incubated at room temperature for 1.5 hours. This data was developed using the same antibody clone with 27339-1-PBS in a different storage buffer formulation.



Immunofluorescent analysis of (4% PFA) fixed HepG2 cells using MRPL35 antibody (27339-1-AP) at dilution of 1:400 and Multi-rAb Coralite® Plus 488-Goat Anti-Rabbit Recombinant Secondary Antibody (H+L) (RGAR002). This data was developed using the same antibody clone with 27339-1-PBS in a different storage buffer formulation.