

For Research Use Only

# PNLIPRP1 Polyclonal antibody, PBS Only

Catalog Number: 27341-1-PBS



## Basic Information

<b>Catalog Number:</b> 27341-1-PBS	<b>GenBank Accession Number:</b> BC025784	<b>Purification Method:</b> Antigen affinity purification
<b>Size:</b> 100ug , Concentration: 1 mg/ml by Nanodrop;	<b>GeneID (NCBI):</b> 5407	
<b>Source:</b> Rabbit	<b>UNIPROT ID:</b> P54315	
<b>Isotype:</b> IgG	<b>Full Name:</b> pancreatic lipase-related protein 1	
<b>Immunogen Catalog Number:</b> AG26341	<b>Calculated MW:</b> 467 aa, 52 kDa	
	<b>Observed MW:</b> 51 kDa	

## Applications

**Tested Applications:**  
WB, IHC, Indirect ELISA

**Species Specificity:**  
human

## Background Information

Pancreatic lipase fulfills a key function in dietary fat absorption by hydrolyzing triglycerides into diglycerides and subsequently into monoglycerides and free fatty acids. Two novel human pancreatic lipase related proteins, hPLRP1 and hPLRP2 are different in colipase dependence and lipase activity. PNLIPRP1 also known as PLRP1, functions as an inhibitor of dietary triglyceride digestion (PMID: 1379598).

## Storage

**Storage:**  
Store at -80°C.

**Storage Buffer:**  
PBS only, pH7.3

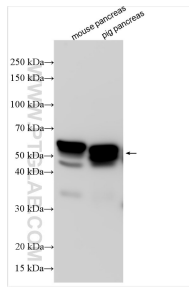
For technical support and original validation data for this product please contact:

T: 1 (888) 4PTGLAB (1-888-478-4522) (toll free in USA), or 1(312) 455-8498 (outside USA)

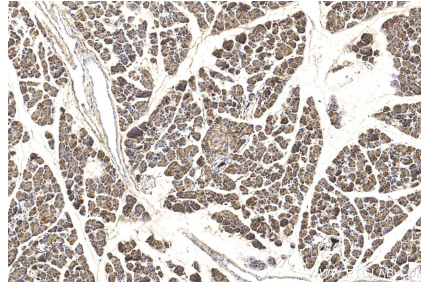
E: [proteintech@ptglab.com](mailto:proteintech@ptglab.com)  
W: [ptglab.com](http://ptglab.com)

**This product is exclusively available under Proteintech Group brand and is not available to purchase from any other manufacturer.**

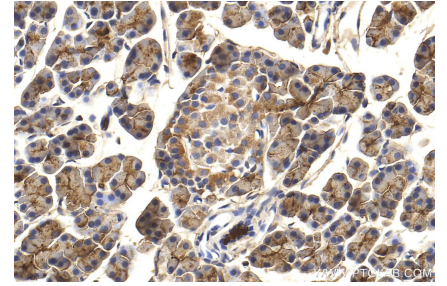
## Selected Validation Data



Various lysates were subjected to SDS PAGE followed by western blot with 27341-1-AP (PNLI/PRP1 antibody) at dilution of 1:40000 incubated at room temperature for 1.5 hours. This data was developed using the same antibody clone with 27341-1-PBS in a different storage buffer formulation.



Immunohistochemical analysis of paraffin-embedded rat pancreas tissue slide using 27341-1-AP (PNLI/PRP1 antibody) at dilution of 1:200 (under 10x lens). Heat mediated antigen retrieval with Tris-EDTA buffer (pH 9.0). This data was developed using the same antibody clone with 27341-1-PBS in a different storage buffer formulation.



Immunohistochemical analysis of paraffin-embedded rat pancreas tissue slide using 27341-1-AP (PNLI/PRP1 antibody) at dilution of 1:200 (under 40x lens). Heat mediated antigen retrieval with Tris-EDTA buffer (pH 9.0). This data was developed using the same antibody clone with 27341-1-PBS in a different storage buffer formulation.