

For Research Use Only

# CNTF Polyclonal antibody

Catalog Number: 27342-1-AP

3 Publications



## Basic Information

Catalog Number:

27342-1-AP

Size:

150ul, Concentration: 800 ug/ml by Nanodrop and 433 ug/ml by Bradford method using BSA as the standard;

Source:

Rabbit

Isotype:

IgG

Immunogen Catalog Number:

AG26410

GenBank Accession Number:

BC074964

GeneID (NCBI):

1270

UNIPROT ID:

P26441

Full Name:

ciliary neurotrophic factor

Calculated MW:

200 aa, 23 kDa

Purification Method:

Antigen affinity purification

Recommended Dilutions:

IHC 1:50-1:500

IF/ICC 1:50-1:500

## Applications

Tested Applications:

IHC, IF/ICC, ELISA

Cited Applications:

IF, Cell treatment

Species Specificity:

human

Cited Species:

human, mouse

Positive Controls:

IHC : human cerebellum tissue,

IF/ICC : PC-12 cells,

**Note-IHC: suggested antigen retrieval with *TE buffer pH 9.0*; (\*) Alternatively, antigen retrieval may be performed with *citrate buffer pH 6.0***

## Notable Publications

Author	Pubmed ID	Journal	Application
Kelly J Heard	34848679	Transl Psychiatry	Cell treatment
Cheri Z Chambers	38980261	Transl Vis Sci Technol	IF
Cheri Z Chambers	37502987	bioRxiv	IF

## Storage

Storage:

Store at -20°C. Stable for one year after shipment.

Storage Buffer:

PBS with 0.02% sodium azide and 50% glycerol pH 7.3.

Aliquoting is unnecessary for -20°C storage

**\*\*\* 20ul sizes contain 0.1% BSA**

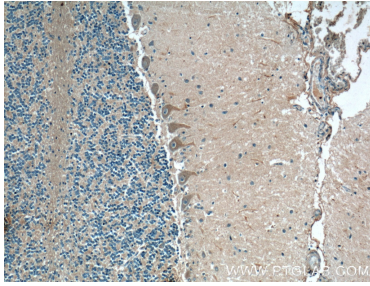
For technical support and original validation data for this product please contact:

T: 1 (888) 4PTGLAB (1-888-478-4522) (toll free in USA), or 1(312) 455-8498 (outside USA)

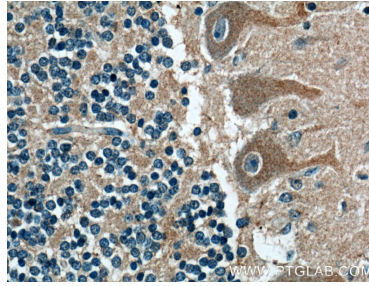
E: [proteintech@ptglab.com](mailto:proteintech@ptglab.com)  
W: [ptglab.com](http://ptglab.com)

This product is exclusively available under Proteintech Group brand and is not available to purchase from any other manufacturer.

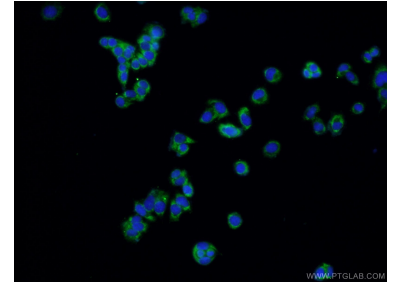
## Selected Validation Data



Immunohistochemical analysis of paraffin-embedded human cerebellum tissue slide using 27342-1-AP (CNTF Antibody) at dilution of 1:200 (under 10x lens).



Immunohistochemical analysis of paraffin-embedded human cerebellum tissue slide using 27342-1-AP (CNTF Antibody) at dilution of 1:200 (under 40x lens).



Immunofluorescent analysis of (-20°C Ethanol) fixed PC-12 cells using 27342-1-AP (CNTF antibody) at dilution of 1:50 and Alexa Fluor 488-conjugated AffiniPure Goat Anti-Rabbit IgG(H+L).