

For Research Use Only

SOCS6 Polyclonal antibody, PBS Only

Catalog Number: 27343-1-PBS



Basic Information

Catalog Number: 27343-1-PBS	GenBank Accession Number: BC020082	Purification Method: Antigen affinity purification
Size: 100ug, Concentration: 1 mg/ml by Nanodrop;	GeneID (NCBI): 9306	
Source: Rabbit	UNIPROT ID: O14544	
Isotype: IgG	Full Name: suppressor of cytokine signaling 6	
Immunogen Catalog Number: AG25594	Calculated MW: 60 kDa	
	Observed MW: 60-75 kDa	

Applications

Tested Applications:
WB, IHC, IP, Indirect ELISA

Species Specificity:
human, mouse

Background Information

SOCS6 (Suppressor of cytokine signaling 6) is also named as CIS4 and SOCS4. SOCS6 is one of eight members of the SOCS family of proteins. SOCS6 is involved in negative regulation of receptor signaling by increasing degradation mediated by ubiquitination of receptors or substrate proteins and induces apoptosis by targeting mitochondrial proteins (PMID: 25172101). SOCS6 is widely expressed in many tissues and is found to be downregulated in many cancers including colorectal cancer, gastric cancer, lung cancer, ovarian cancer, stomach cancer, thyroid cancer, hepatocellular carcinoma, and pancreatic cancer (PMID: 25172101). In addition to its molecular weight of 60 kDa, SOCS6 has a 70 kDa isoform (PMID: 34169835, PMID: 22125600).

Storage

Storage:
Store at -80°C.

Storage Buffer:
PBS only, pH7.3

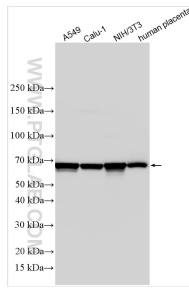
For technical support and original validation data for this product please contact:

T: 1 (888) 4PTGLAB (1-888-478-4522) (toll free in USA), or 1(312) 455-8498 (outside USA)

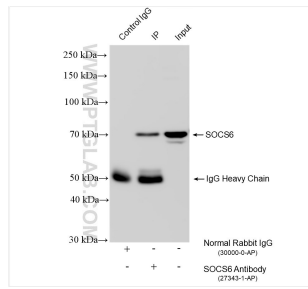
E: proteintech@ptglab.com
W: ptglab.com

This product is exclusively available under Proteintech Group brand and is not available to purchase from any other manufacturer.

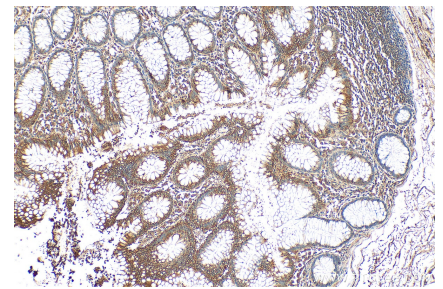
Selected Validation Data



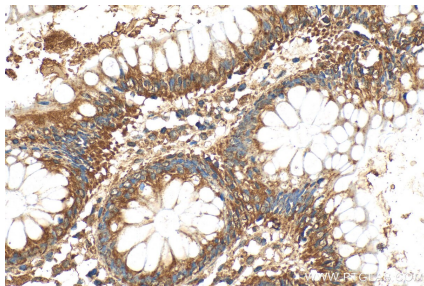
Various lysates were subjected to SDS PAGE followed by western blot with 27343-1-AP (SOCS6 antibody) at dilution of 1:1500 incubated at room temperature for 1.5 hours. This data was developed using the same antibody clone with 27343-1-PBS in a different storage buffer formulation.



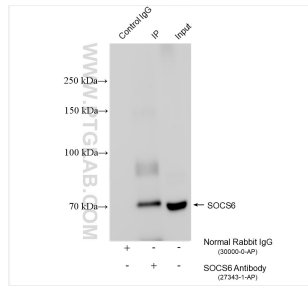
IP result of anti-SOCS6 (IP:27343-1-AP, 4ug; Detection:27343-1-AP 1:1500) with NIH/3T3 cells lysate 1200 ug. This data was developed using the same antibody clone with 27343-1-PBS in a different storage buffer formulation.



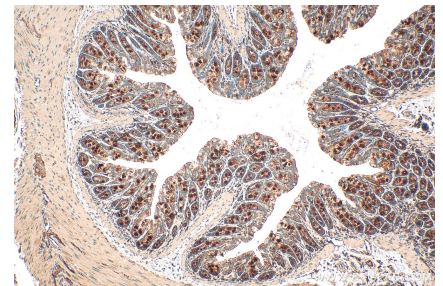
Immunohistochemical analysis of paraffin-embedded human colon tissue slide using 27343-1-AP (SOCS6 antibody) at dilution of 1:200 (under 10x lens). Heat mediated antigen retrieval with Tris-EDTA buffer (pH 9.0). This data was developed using the same antibody clone with 27343-1-PBS in a different storage buffer formulation.



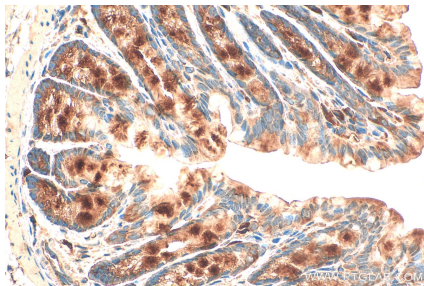
Immunohistochemical analysis of paraffin-embedded human colon tissue slide using 27343-1-AP (SOCS6 antibody) at dilution of 1:200 (under 40x lens). Heat mediated antigen retrieval with Tris-EDTA buffer (pH 9.0). This data was developed using the same antibody clone with 27343-1-PBS in a different storage buffer formulation.



IP result of anti-SOCS6 (IP:27343-1-AP, 4ug; Detection:27343-1-AP 1:1500) with human placenta tissue lysate 960 ug. This data was developed using the same antibody clone with 27343-1-PBS in a different storage buffer formulation.



Immunohistochemical analysis of paraffin-embedded mouse colon tissue slide using 27343-1-AP (SOCS6 antibody) at dilution of 1:200 (under 10x lens). Heat mediated antigen retrieval with Tris-EDTA buffer (pH 9.0). This data was developed using the same antibody clone with 27343-1-PBS in a different storage buffer formulation.



Immunohistochemical analysis of paraffin-embedded mouse colon tissue slide using 27343-1-AP (SOCS6 antibody) at dilution of 1:200 (under 40x lens). Heat mediated antigen retrieval with Tris-EDTA buffer (pH 9.0). This data was developed using the same antibody clone with 27343-1-PBS in a different storage buffer formulation.