

For Research Use Only

# NSD1 Polyclonal antibody

Catalog Number: 27346-1-AP



## Basic Information

<b>Catalog Number:</b> 27346-1-AP	<b>GenBank Accession Number:</b> BC150628	<b>Purification Method:</b> Antigen affinity purification
<b>Size:</b> 150ul , Concentration: 850 ug/ml by Nanodrop;	<b>GeneID (NCBI):</b> 64324	<b>Recommended Dilutions:</b> WB 1:1000-1:4000
<b>Source:</b> Rabbit	<b>UNIPROT ID:</b> Q96L73	
<b>Isotype:</b> IgG	<b>Full Name:</b> nuclear receptor binding SET domain protein 1	
<b>Immunogen Catalog Number:</b> AG26425	<b>Observed MW:</b> 267-310 kDa	

## Applications

<b>Tested Applications:</b> WB, ELISA	<b>Positive Controls:</b> WB : HEK-293 cells,
<b>Species Specificity:</b> human	

## Background Information

NSD1 (nuclear receptor SET (su(var)3-9, enhancer-of-zeste, trithorax) domain containing protein-1), which is isolated and characterized in 2001, belongs to the NSD protein lysine methyltransferase (KMT) family. This family has three members, NSD1 (KMT3B), NSD2 (WHSC1/MMSET) and NSD3 (WHSC1L1), which could regulate the expression of target genes through methylation of lysine 36 on histone H3(H3K36). NSD1 could bind various promoter elements to regulate transcription via interactions with H3K36 methylation and RNA polymerase II.

## Storage

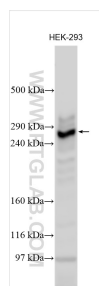
**Storage:**  
Store at -20°C. Stable for one year after shipment.  
**Storage Buffer:**  
PBS with 0.02% sodium azide and 50% glycerol pH 7.3.  
Aliquoting is unnecessary for -20°C storage

\*\*\* 20ul sizes contain 0.1% BSA

For technical support and original validation data for this product please contact:  
T: 1 (888) 4PTGLAB (1-888-478-4522) (toll free in USA), or 1(312) 455-8498 (outside USA)  
E: [proteintech@ptglab.com](mailto:proteintech@ptglab.com)  
W: [ptglab.com](http://ptglab.com)

This product is exclusively available under Proteintech Group brand and is not available to purchase from any other manufacturer.

## Selected Validation Data



HEK-293 cells were subjected to SDS PAGE followed by western blot with 27346-1-AP (NSD1 antibody) at dilution of 1:2000 incubated at room temperature for 1.5 hours.