

For Research Use Only

# AP50 Polyclonal antibody

Catalog Number: 27355-1-AP

Featured Product

6 Publications



## Basic Information

### Catalog Number:

27355-1-AP

### Size:

150ul, Concentration: 260 ug/ml by Nanodrop and 233 ug/ml by Bradford method using BSA as the standard;

### Source:

Rabbit

### Isotype:

IgG

### Immunogen Catalog Number:

AG26059

### GenBank Accession Number:

BC013796

### GeneID (NCBI):

1173

### UNIPROT ID:

Q96CW1

### Full Name:

adaptor-related protein complex 2, mu 1 subunit

### Calculated MW:

433 aa, 49 kDa

### Observed MW:

50 kDa

### Purification Method:

Antigen affinity purification

### Recommended Dilutions:

WB 1:500-1:2400

IHC 1:50-1:500

## Applications

### Tested Applications:

WB, IHC, ELISA

### Cited Applications:

WB, IHC, IF, IP

### Species Specificity:

human, mouse, rat

### Cited Species:

human, mouse

**Note-IHC: suggested antigen retrieval with TE buffer pH 9.0; (\*) Alternatively, antigen retrieval may be performed with citrate buffer pH 6.0**

### Positive Controls:

WB : mouse brain tissue, HepG2 cells, rat brain tissue

IHC : human kidney tissue,

## Notable Publications

Author	Pubmed ID	Journal	Application
Juho Pirhonen	36054547	Cancer Res	IHC
Cong-Cong Wu	32564485	Oral Dis	IHC
Ashwinkumar Subramenium Ganapathy	34964704	Autophagy	WB,IF,IP

## Storage

### Storage:

Store at -20°C. Stable for one year after shipment.

### Storage Buffer:

PBS with 0.02% sodium azide and 50% glycerol pH 7.3.

Aliquoting is unnecessary for -20°C storage

\*\*\* 20ul sizes contain 0.1% BSA

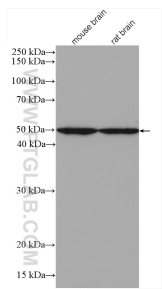
For technical support and original validation data for this product please contact:

T: 1 (888) 4PTGLAB (1-888-478-4522) (toll free in USA), or 1(312) 455-8498 (outside USA)

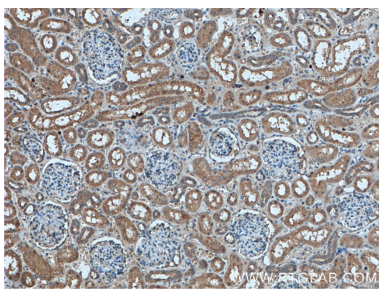
E: [proteintech@ptglab.com](mailto:proteintech@ptglab.com)  
W: [ptglab.com](http://ptglab.com)

This product is exclusively available under Proteintech Group brand and is not available to purchase from any other manufacturer.

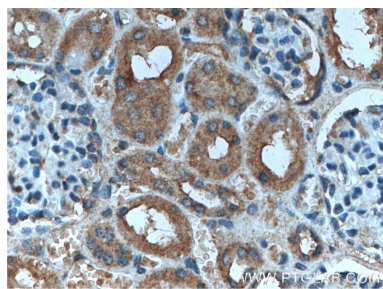
## Selected Validation Data



Various lysates were subjected to SDS PAGE followed by western blot with 27355-1-AP (AP50 antibody) at dilution of 1:1200 incubated at room temperature for 1.5 hours.



Immunohistochemical analysis of paraffin-embedded human kidney tissue slide using 27355-1-AP (AP50 antibody) at dilution of 1:200 (under 10x lens. Heat mediated antigen retrieval with Tris-EDTA buffer (pH 9.0).



Immunohistochemical analysis of paraffin-embedded human kidney tissue slide using 27355-1-AP (AP50 antibody) at dilution of 1:200 (under 40x lens. Heat mediated antigen retrieval with Tris-EDTA buffer (pH 9.0).