

For Research Use Only

SEMA4A Polyclonal antibody

Catalog Number: 27359-1-AP

Featured Product

1 Publications



Basic Information

Catalog Number: 27359-1-AP	GenBank Accession Number: BC020974	Purification Method: Antigen affinity purification
Size: 150ul, Concentration: 400 µg/ml by Nanodrop and 333 µg/ml by Bradford method using BSA as the standard;	GeneID (NCBI): 64218	Recommended Dilutions: WB 1:500-1:2000 IHC 1:50-1:500
Source: Rabbit	Full Name: sema domain, immunoglobulin domain (Ig), transmembrane domain (TM) and short cytoplasmic domain, (semaphorin) 4A	
Isotype: IgG	Calculated MW: 761 aa, 84 kDa	
Immunogen Catalog Number: AG26023	Observed MW: 120-150 kDa	

Applications

Tested Applications: IHC, WB, ELISA	Positive Controls: WB: HeLa cells, PC-3 cells
Cited Applications: WB	IHC: human breast cancer tissue, human placenta tissue
Species Specificity: human	
Cited Species: human	
Note-IHC: suggested antigen retrieval with TE buffer pH 9.0; (*) Alternatively, antigen retrieval may be performed with citrate buffer pH 6.0	

Background Information

Sema4A, the membrane-bound class 4 semaphorin, belongs to semaphorins superfamily. Sema4A functions as potent axonal repellants in the nervous system, and is involved in vascular development. Two species of Sema4A with molecular weights of about 150 and 120 kDa were observed. The antibody recognizes the Sema4A protein, which is of appropriate molecular size (~120 kDa) for the glycosylated protein (PMID: 26296689/17318185/26024919).

Notable Publications

Author	Pubmed ID	Journal	Application
Xiao Liu	37779872	J Cancer	WB

Storage

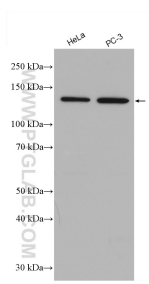
Storage:
Store at -20°C. Stable for one year after shipment.
Storage Buffer:
PBS with 0.02% sodium azide and 50% glycerol pH 7.3.
Aliquoting is unnecessary for -20°C storage

*** 20ul sizes contain 0.1% BSA

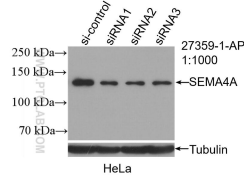
For technical support and original validation data for this product please contact:
T: 1 (888) 4PTGLAB (1-888-478-4522) (toll free in USA), or 1(312) 455-8498 (outside USA)
E: proteintech@ptglab.com
W: ptglab.com

This product is exclusively available under Proteintech Group brand and is not available to purchase from any other manufacturer.

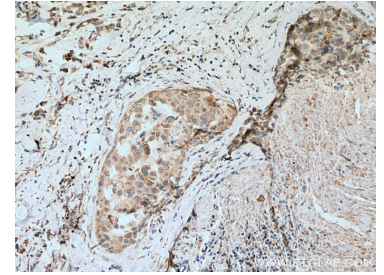
Selected Validation Data



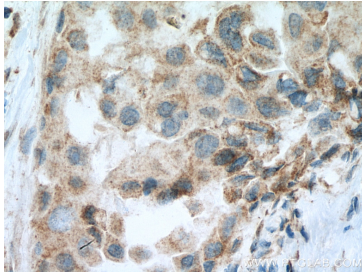
Various lysates were subjected to SDS PAGE followed by western blot with 27359-1-AP (SEMA4A antibody) at dilution of 1:1500 incubated at room temperature for 1.5 hours.



WB result of SEMA4A antibody (27359-1-AP; 1:1000; incubated at room temperature for 1.5 hours) with sh-Control and sh-SEMA4A transfected HeLa cells.



Immunohistochemical analysis of paraffin-embedded human breast cancer tissue slide using 27359-1-AP (SEMA4A antibody) at dilution of 1:200 (under 10x lens). Heat mediated antigen retrieval with Tris-EDTA buffer (pH 9.0).



Immunohistochemical analysis of paraffin-embedded human breast cancer tissue slide using 27359-1-AP (SEMA4A antibody) at dilution of 1:200 (under 40x lens). Heat mediated antigen retrieval with Tris-EDTA buffer (pH 9.0).