

For Research Use Only

CHI3L2 Polyclonal antibody, PBS Only

Catalog Number: 27363-1-PBS



Basic Information

Catalog Number: 27363-1-PBS	GenBank Accession Number: BC011460	Purification Method: Antigen affinity purification
Size: 100ug, Concentration: 1 mg/ml by Nanodrop;	GeneID (NCBI): 1117	
Source: Rabbit	UNIPROT ID: Q15782	
Isotype: IgG	Full Name: chitinase 3-like 2	
Immunogen Catalog Number: AG26386	Calculated MW: 390 aa, 44 kDa	
	Observed MW: 44-48 kDa	

Applications

Tested Applications:
WB, Indirect ELISA

Species Specificity:
human

Background Information

CHI3L2 (Chitinase-3-Like Protein 2), also known as YKL-39, is a member of the chitinase-like protein family, which belongs to the glycoside hydrolase 18 family. CHI3L2 is primarily involved in cartilage biogenesis and tissue remodeling. It is highly expressed in certain tissues, including the appendix and salivary glands.

Storage

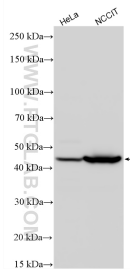
Storage:
Store at -80°C.

Storage Buffer:
PBS only, pH7.3

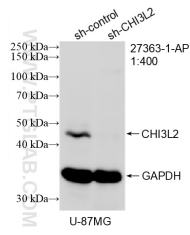
For technical support and original validation data for this product please contact:
T: 1 (888) 4PTGLAB (1-888-478-4522) (toll free in USA), or 1(312) 455-8498 (outside USA) E: proteintech@ptglab.com W: ptglab.com

This product is exclusively available under Proteintech Group brand and is not available to purchase from any other manufacturer.

Selected Validation Data



Various lysates were subjected to SDS PAGE followed by western blot with 27363-1-AP (CHI3L2 antibody) at dilution of 1:2000 incubated at room temperature for 1.5 hours. This data was developed using the same antibody clone with 27363-1-PBS in a different storage buffer formulation.



WB result of CHI3L2 antibody (27363-1-AP; 1:400; incubated at room temperature for 1.5 hours) with sh-Control and sh-CHI3L2 transfected U-87 MG cells. This data was developed using the same antibody clone with 27363-1-PBS in a different storage buffer formulation.